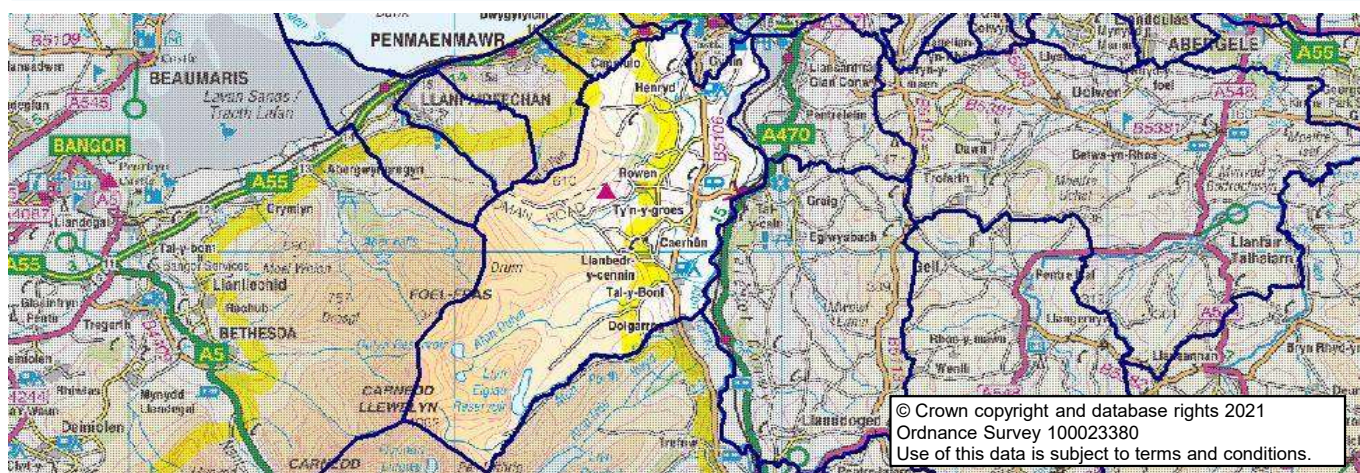


# Conwy County Borough Council's ward profiles 2021

## Caerhun

### Map



These statistics may be used under the terms of the Open Government Licence.

Produced by the Corporate Research and Information Unit, Conwy County Borough Council, November 2021

[research.unit@conwy.gov.uk](mailto:research.unit@conwy.gov.uk)

<http://www.conwy.gov.uk/statistics>

### Population characteristics

#### Population, age and gender 2020 (ONS MYE)

	Caerhun		Conwy CB	Wales	GB
	Number	%	%	%	%
Mid-year population 2010	2,000	Change	Change	Change	Change
<b>Mid-year population 2020</b>	2,050	3.0%	3.1%	3.9%	6.9%
Males	1,000	48.1%	48.7%	49.3%	49.4%
Females	1,100	51.9%	51.3%	50.7%	50.6%
Aged 0-15	300	14.4%	16.0%	17.8%	18.9%
Aged 16-29	250	12.2%	13.5%	17.5%	17.2%
Aged 30-44	250	12.4%	14.8%	17.5%	19.4%
Aged 45-64	650	31.4%	27.9%	26.2%	25.8%
Aged 65+	600	29.5%	27.9%	21.1%	18.7%
Population density 2020 (persons/ha)		0.27	1.05	1.53	4.32

#### Population characteristics (Census 2011)

	Caerhun		Conwy CB	Wales	E & W
	Number	%			
Born in Wales	1,152	57.4%	54.4%	72.7%	4.9%
Born outside the UK	55	2.7%	4.3%	5.5%	13.4%
Ethnicity - white British	1,960	97.7%	95.4%	93.2%	80.5%
Other white	30	1.5%	2.3%	2.4%	5.5%
Mixed ethnic group	12	0.6%	0.8%	1.0%	2.2%
Other ethnic groups	5	0.2%	1.5%	3.4%	11.8%
Religion - Christian	1,283	63.9%	64.7%	57.6%	59.3%
Other religion	24	1.2%	1.5%	2.7%	8.4%
No religion	509	25.4%	26.1%	32.1%	25.1%
(of persons aged 3+)					
Speak Welsh	824	41.9%	27.4%	19.0%	-
No skills in Welsh	878	44.6%	60.6%	73.3%	-

### Health

#### Health and provision of care (Census 2011)

	Caerhun		Conwy CB	Wales	E & W
	Number	%			
People with limiting long term illness	405	20.2%	24.2%	22.7%	17.9%
People providing unpaid care	275	13.7%	11.8%	12.1%	10.3%

# Conwy County Borough Council's ward profiles 2021

## Caerhun

### Housing and living arrangements

#### Households (Census 2011)

	Caerhun		Conwy CB	Wales	E & W
	Number	%			
<b>Total households</b>	<b>887</b>		<b>51,177</b>	<b>1,302,676</b>	<b>23,366,044</b>
<b>Household composition</b>					
All one person household	265	29.9%	33.8%	30.8%	30.2%
- one person; aged 65+	150	16.9%	17.1%	13.7%	12.4%
All households with dependent children	204	23.0%	24.5%	28.2%	29.1%
- lone parents with dependents	32	3.6%	6.2%	7.5%	7.2%
All households of only pensioners	285	32.1%	29.2%	22.9%	20.9%
Population in private households	2,001	99.7%	97.7%	98.3%	98.2%
Average household size		2.26	2.20	2.31	2.36
<b>Household facilities</b>					
No central heating	54	6.1%	3.6%	2.3%	2.7%
Overcrowded	16	1.8%	4.3%	5.2%	8.5%
Average rooms per household		6.4	5.6	5.7	5.4
No car	99	11.2%	21.7%	22.9%	25.6%
<b>Tenure</b>					
Owner occupied	705	79.5%	70.1%	67.8%	64.3%
Rented from social landlord	70	7.9%	11.6%	16.5%	17.6%
Other rented	112	12.6%	18.3%	15.7%	18.0%

#### Dwellings by council tax band (VOA, March 2021)

	Caerhun		Conwy CB	Wales
	Number	%		
Total dwellings	1,010	100%	57,720	1,458,100
Band A	20	2.0%	9.3%	14.5%
Band B	70	7.0%	14.4%	20.9%
Band C	220	22.0%	26.9%	21.8%
Band D	200	20.0%	20.5%	16.2%
Band E	230	23.0%	15.9%	13.5%
Band F	140	14.0%	8.7%	8.2%
Band G	90	9.0%	3.3%	3.7%
Band H	30	3.0%	0.7%	0.9%
Band I	10	1.0%	0.3%	0.4%

#### House prices (Land Registry, 2020; CACI PayCheck, 2020)

	Caerhun		Conwy CB	Wales	E & W
	£		£	£	£
Median (All house types)	187,000		175,000	165,000	244,950
Lower quartile (All house types)	150,000		131,000	117,000	156,000
Ratio income:houseprice (median)		5.8	5.9	5.7	7.3
Ratio income:houseprice (lower quartile)		7.9	7.6	7.0	8.3

For this measure, results at ward level are based on data for Conwy CBC strategic sub areas.

#### Housing related benefits (DWP, August 2021)

	Caerhun		Conwy CB	Wales	GB
		%			
Total claimants	85	100%	10,060	280,630	5,733,155
- housing benefit	45	52.9%	54.0%	51.9%	48.2%
- Universal Credit housing element	40	47.1%	46.0%	48.1%	51.8%
- private rented	40	46.0%	48.5%	34.7%	37.6%
- social rented	45	50.6%	50.9%	64.8%	61.5%
- households with children	25	29.9%	34.2%	36.7%	38.2%
<b>Characteristics for housing benefit only</b>					
- single pensioner (% HB)	20	47.8%	35.3%	32.9%	33.9%

These statistics may be used under the terms of the Open Government Licence.

Produced by the Corporate Research and Information Unit, Conwy County Borough Council, November 2021

[research.unit@conwy.gov.uk](mailto:research.unit@conwy.gov.uk)

<http://www.conwy.gov.uk/statistics>

# Conwy County Borough Council's ward profiles 2021

## Caerhun

### Community safety

#### Crime incidences (North Wales Police)

	Caerhun		Conwy CB	Wales	E & W
(year end 31st March)	Number	Rate*			
All crime incidences 2020/21	50	24.11	82.26	72.87	78.03
Violence against the person	31	14.95	40.57	30.04	30.09
Theft & handling	4	1.93	9.22	9.47	11.80
Criminal damage & arson	5	2.41	9.20	8.71	8.04

\*annual crime rate per 1,000 population

### Economy and employment

#### Industry of employment (Census 2011)

	Caerhun		Conwy CB	Wales	E & W
	Number	%			
<b>All in employment (aged 16-74)</b>	<b>938</b>		<b>50,093</b>	<b>1,363,615</b>	<b>26,526,336</b>
Agriculture, forestry & fishing	54	5.8%	2.1%	1.7%	0.9%
Mining, quarrying, energy, water	16	1.7%	1.6%	1.9%	1.5%
Manufacturing	29	3.1%	4.9%	10.5%	8.9%
Construction	64	6.8%	8.2%	8.2%	7.7%
Wholesale & retail	125	13.3%	17.0%	15.6%	15.9%
Transport & storage	30	3.2%	3.7%	3.9%	5.0%
Accommodation & food services	85	9.1%	9.9%	6.2%	5.6%
Communication, finance, property	49	5.2%	5.2%	6.6%	9.7%
Professional, scientific, technical	68	7.2%	4.6%	4.3%	6.6%
Administrative & support services	39	4.2%	3.7%	4.0%	4.9%
Public administration & defence	74	7.9%	7.1%	7.9%	6.0%
Education	139	14.8%	10.2%	10.1%	9.9%
Health & social work	135	14.4%	16.7%	14.5%	12.5%
Other	31	3.3%	5.1%	4.5%	5.0%
Work mainly at or from home	146	15.6%	7.2%	5.4%	5.4%
No qualifications (all aged 16+)	336	19.7%	25.6%	25.9%	22.7%
Level 4+ qualification	618	36.2%	25.5%	24.5%	27.2%

#### Social class (Census, 2011)

	Caerhun		Conwy CB	Wales	E & W
	Number	%			
<b>All aged 16-74</b>	<b>1,467</b>		<b>81,906</b>	<b>2,245,166</b>	<b>41,126,540</b>
Managerial & professional	559	38.1%	29.0%	27.4%	31.1%
Skilled	492	33.5%	31.8%	29.4%	29.1%
Part / unskilled	285	19.4%	27.9%	28.8%	25.2%
Students & other	131	8.9%	11.3%	14.5%	14.6%

#### Unemployment (claimant count) (NOMIS, 2021)

	Caerhun		Conwy CB	Wales	GB
	Number	%			
October 2021	30	2.8%	4.6%	4.3%	4.8%
July 2021 (previous quarter)	40	3.7%	5.1%	4.8%	5.4%
October 2020 (previous year)	50	4.2%	6.3%	5.7%	6.2%
October 2016 (5 years ago)	5	0.5%	2.1%	2.2%	1.8%
Claimants aged 16-24 (Oct-21)*	5	-	17.4%	19.3%	17.0%
Claimants aged 50+ (Oct 21)*	10	-	29.8%	23.1%	24.3%

\* Rounded to nearest 5. % is of all claimants.

These statistics may be used under the terms of the Open Government Licence.

Produced by the Corporate Research and Information Unit, Conwy County Borough Council, November 2021

[research.unit@conwy.gov.uk](mailto:research.unit@conwy.gov.uk)

<http://www.conwy.gov.uk/statistics>

# Conwy County Borough Council's ward profiles 2021

## Caerhun

### Income and benefits

#### Household income (CACI PayCheck, 2021)

	Caerhun		Conwy CB	Wales	GB
	£	%			
Median income (annual)	30,550		28,300	27,850	32,750
Lower quartile	17,850		16,350	15,900	18,150
Households below 60% GB median (= < £19,642)		29.0%	32.9%	34.0%	28.0%

For this measure, results at ward level are based on data for Conwy CBC strategic sub areas.

#### Benefits (DWP, May 2021)

There is a discontinuity in the benefits data, as Universal Credit is rolled out and starts to replace older awards systems. % is of all in that age group.

	Caerhun		Conwy CB	Wales	GB
	Number	%			
<b>Children (aged 0-15)</b>					
Disability Living Allowance (DLA)	10	3.4%	5.5%	4.7%	4.5%
<b>Working age (aged 16-66)</b>					
Universal Credit	90	7.5%	14.6%	13.9%	14.1%
Job Seekers Allowance (JSA)	5	0.5%	0.5%	0.4%	0.4%
Employment & Support Allowance (ESA)	45	3.5%	5.9%	6.2%	4.3%
Disability Living Allowance (DLA)	5	0.4%	0.3%	0.2%	0.6%
Personal Independence Payments (PIP)	60	4.7%	7.8%	8.1%	5.5%
Carer's Allowance	35	2.7%	3.0%	3.1%	2.4%
<b>Pensioners (aged 67+)</b>					
State Pension (Nov 2020)	555				
Pension Credit	45	8.4%	13.1%	14.6%	13.2%
Attendance Allowance	65	11.9%	17.2%	16.5%	13.8%
Disability Living Allowance (DLA)	20	4.0%	5.5%	8.6%	5.2%
Personal Independence Payments (PIP)	10	2.0%	4.0%	5.6%	3.6%
Carer's Allowance	10	1.5%	3.7%	4.1%	2.9%

### Poverty and deprivation

#### Children in low income families - relative income poverty (DWP, 2019/2020)

	Caerhun		Conwy CB	Wales	GB
Children in in-work families	40	12.8%	17.4%	16.9%	16.7%
Children in out-of-work families	20	6.7%	7.4%	8.2%	6.7%
<b>Total</b>	<b>60</b>	<b>19.5%</b>	<b>24.8%</b>	<b>25.0%</b>	<b>23.4%</b>

As % all children aged 0-15. 'In work' is working 16 hrs a week or more. Relative income poverty = below 60% of UK median.

#### Welsh index of multiple deprivation (Welsh Government, 2019)

	Caerhun		Conwy CB	
	10%	25%	10%	25%
Total LSOAs in area	1		71	
<b>No. LSOAs in most deprived:</b>	<b>10%</b>	<b>25%</b>	<b>10%</b>	<b>25%</b>
In each deprivation domain				
Overall Index	0	0	4	11
Income	0	0	5	14
Employment	0	0	5	15
Health	0	0	3	10
Education	0	0	1	9
Access to services	1	1	9	18
Housing	0	0	6	17
Community safety	0	0	0	4
Physical environment	0	1	6	16

Deprivation data shows how many lower super output areas (LSOAs) in the area are in the 10% and 25% most deprived LSOAs in Wales.

These statistics may be used under the terms of the Open Government Licence.

Produced by the Corporate Research and Information Unit, Conwy County Borough Council, November 2021

[research.unit@conwy.gov.uk](mailto:research.unit@conwy.gov.uk)

<http://www.conwy.gov.uk/statistics>