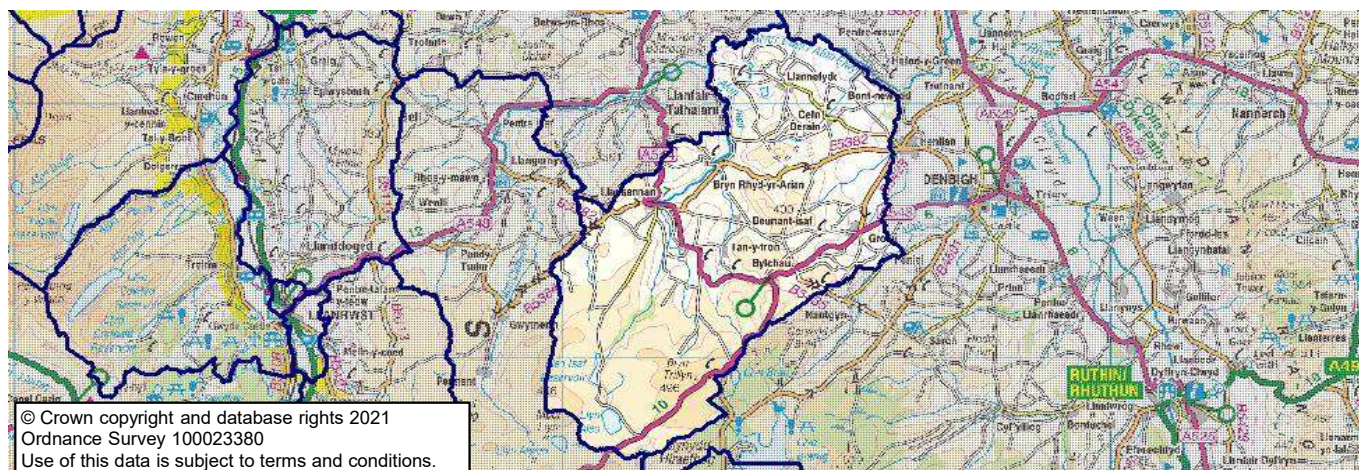


Conwy County Borough Council's ward profiles 2021

Llansannan

Map



These statistics may be used under the terms of the Open Government Licence.

Produced by the Corporate Research and Information Unit, Conwy County Borough Council, November 2021

research.unit@conwy.gov.uk

<http://www.conwy.gov.uk/statistics>

Population characteristics

Population, age and gender 2020 (ONS MYE)

	Llansannan		Conwy CB	Wales	GB
	Number	%	%	%	%
Mid-year population 2010	1,900	Change	Change	Change	Change
Mid-year population 2020	2,000	3.0%	3.1%	3.9%	6.9%
Males	1,050	53.5%	48.7%	49.3%	49.4%
Females	900	46.5%	51.3%	50.7%	50.6%
Aged 0-15	300	14.8%	16.0%	17.8%	18.9%
Aged 16-29	350	16.5%	13.5%	17.5%	17.2%
Aged 30-44	250	13.4%	14.8%	17.5%	19.4%
Aged 45-64	650	32.7%	27.9%	26.2%	25.8%
Aged 65+	450	22.6%	27.9%	21.1%	18.7%
Population density 2020 (persons/ha)		0.16	1.05	1.53	4.32

Population characteristics (Census 2011)

	Llansannan		Conwy CB	Wales	E & W
	Number	%			
Born in Wales	1,390	72.2%	54.4%	72.7%	4.9%
Born outside the UK	36	1.9%	4.3%	5.5%	13.4%
Ethnicity - white British	1,900	98.7%	95.4%	93.2%	80.5%
Other white	14	0.7%	2.3%	2.4%	5.5%
Mixed ethnic group	3	0.2%	0.8%	1.0%	2.2%
Other ethnic groups	8	0.4%	1.5%	3.4%	11.8%
Religion - Christian	1,395	72.5%	64.7%	57.6%	59.3%
Other religion	11	0.6%	1.5%	2.7%	8.4%
No religion	373	19.4%	26.1%	32.1%	25.1%
(of persons aged 3+)					
Speak Welsh	1,179	63.0%	27.4%	19.0%	-
No skills in Welsh	553	29.6%	60.6%	73.3%	-

Health

Health and provision of care (Census 2011)

	Llansannan		Conwy CB	Wales	E & W
	Number	%			
People with limiting long term illness	381	19.8%	24.2%	22.7%	17.9%
People providing unpaid care	254	13.2%	11.8%	12.1%	10.3%

Conwy County Borough Council's ward profiles 2021

Llansannan

Housing and living arrangements

Households (Census 2011)

	Llansannan		Conwy CB	Wales	E & W
	Number	%			
Total households	762		51,177	1,302,676	23,366,044
Household composition					
All one person household	198	26.0%	33.8%	30.8%	30.2%
- one person; aged 65+	88	11.5%	17.1%	13.7%	12.4%
All households with dependent children	205	26.9%	24.5%	28.2%	29.1%
- lone parents with dependents	16	2.1%	6.2%	7.5%	7.2%
All households of only pensioners	164	21.5%	29.2%	22.9%	20.9%
Population in private households	1,925	100.0%	97.7%	98.3%	98.2%
Average household size		2.53	2.20	2.31	2.36
Household facilities					
No central heating	38	5.0%	3.6%	2.3%	2.7%
Overcrowded	24	3.1%	4.3%	5.2%	8.5%
Average rooms per household		6.5	5.6	5.7	5.4
No car	52	6.8%	21.7%	22.9%	25.6%
Tenure					
Owner occupied	558	73.2%	70.1%	67.8%	64.3%
Rented from social landlord	80	10.5%	11.6%	16.5%	17.6%
Other rented	124	16.3%	18.3%	15.7%	18.0%

Dwellings by council tax band (VOA, March 2021)

	Llansannan		Conwy CB	Wales
	Number	%		
Total dwellings	810	100%	57,720	1,458,100
Band A	30	3.7%	9.3%	14.5%
Band B	100	12.3%	14.4%	20.9%
Band C	120	14.8%	26.9%	21.8%
Band D	140	17.3%	20.5%	16.2%
Band E	220	27.2%	15.9%	13.5%
Band F	150	18.5%	8.7%	8.2%
Band G	50	6.2%	3.3%	3.7%
Band H	-	-	0.7%	0.9%
Band I	-	-	0.3%	0.4%

House prices (Land Registry, 2020; CACI PayCheck, 2020)

	Llansannan		Conwy CB	Wales	E & W
	£		£	£	£
Median (All house types)	£ 155,250		£ 175,000	£ 165,000	£ 244,950
Lower quartile (All house types)	£ 127,125		£ 131,000	£ 117,000	£ 156,000
Ratio income:houseprice (median)		5.6	5.9	5.7	7.3
Ratio income:houseprice (lower quartile)		7.8	7.6	7.0	8.3

For this measure, results at ward level are based on data for Conwy CBC strategic sub areas.

Housing related benefits (DWP, August 2021)

	Llansannan		Conwy CB	Wales	GB
		%			
Total claimants	75	100%	10,060	280,630	5,733,155
- housing benefit	50	65.8%	54.0%	51.9%	48.2%
- Universal Credit housing element	25	34.2%	46.0%	48.1%	51.8%
- private rented	15	18.4%	48.5%	34.7%	37.6%
- social rented	60	77.6%	50.9%	64.8%	61.5%
- households with children	20	25.0%	34.2%	36.7%	38.2%
Characteristics for housing benefit only					
- single pensioner (% HB)	10	24.0%	35.3%	32.9%	33.9%

These statistics may be used under the terms of the Open Government Licence.

Produced by the Corporate Research and Information Unit, Conwy County Borough Council, November 2021

research.unit@conwy.gov.uk

<http://www.conwy.gov.uk/statistics>

Conwy County Borough Council's ward profiles 2021

Llansannan

Community safety

Crime incidences (North Wales Police)

	Llansannan		Conwy CB	Wales	E & W
(year end 31st March)	Number	Rate*			
All crime incidences 2020/21	133	67.27	82.26	72.87	78.03
Violence against the person	67	33.89	40.57	30.04	30.09
Theft & handling	12	6.07	9.22	9.47	11.80
Criminal damage & arson	9	4.55	9.20	8.71	8.04

*annual crime rate per 1,000 population

Economy and employment

Industry of employment (Census 2011)

	Llansannan		Conwy CB	Wales	E & W
	Number	%			
All in employment (aged 16-74)	1,021		50,093	1,363,615	26,526,336
Agriculture, forestry & fishing	159	15.6%	2.1%	1.7%	0.9%
Mining, quarrying, energy, water	12	1.2%	1.6%	1.9%	1.5%
Manufacturing	61	6.0%	4.9%	10.5%	8.9%
Construction	115	11.3%	8.2%	8.2%	7.7%
Wholesale & retail	91	8.9%	17.0%	15.6%	15.9%
Transport & storage	18	1.8%	3.7%	3.9%	5.0%
Accommodation & food services	47	4.6%	9.9%	6.2%	5.6%
Communication, finance, property	46	4.5%	5.2%	6.6%	9.7%
Professional, scientific, technical	42	4.1%	4.6%	4.3%	6.6%
Administrative & support services	27	2.6%	3.7%	4.0%	4.9%
Public administration & defence	60	5.9%	7.1%	7.9%	6.0%
Education	133	13.0%	10.2%	10.1%	9.9%
Health & social work	169	16.6%	16.7%	14.5%	12.5%
Other	41	4.0%	5.1%	4.5%	5.0%
Work mainly at or from home	170	16.7%	7.2%	5.4%	5.4%
No qualifications (all aged 16+)	353	22.7%	25.6%	25.9%	22.7%
Level 4+ qualification	437	28.1%	25.5%	24.5%	27.2%

Social class (Census, 2011)

	Llansannan		Conwy CB	Wales	E & W
	Number	%			
All aged 16-74	1,419		81,906	2,245,166	41,126,540
Managerial & professional	419	29.5%	29.0%	27.4%	31.1%
Skilled	585	41.2%	31.8%	29.4%	29.1%
Part / unskilled	284	20.0%	27.9%	28.8%	25.2%
Students & other	131	9.2%	11.3%	14.5%	14.6%

Unemployment (claimant count) (NOMIS, 2021)

	Llansannan		Conwy CB	Wales	GB
	Number	%			
October 2021	20	1.8%	4.6%	4.3%	4.8%
July 2021 (previous quarter)	30	2.3%	5.1%	4.8%	5.4%
October 2020 (previous year)	30	2.6%	6.3%	5.7%	6.2%
October 2016 (5 years ago)	10	0.6%	2.1%	2.2%	1.8%
Claimants aged 16-24 (Oct-21)*	5	-	17.4%	19.3%	17.0%
Claimants aged 50+ (Oct 21)*	10	-	29.8%	23.1%	24.3%

* Rounded to nearest 5. % is of all claimants.

These statistics may be used under the terms of the Open Government Licence.

Produced by the Corporate Research and Information Unit, Conwy County Borough Council, November 2021

research.unit@conwy.gov.uk

<http://www.conwy.gov.uk/statistics>

Conwy County Borough Council's ward profiles 2021

Llansannan

Income and benefits

Household income (CACI PayCheck, 2021)

	Llansannan		Conwy CB	Wales	GB
	£	%			
Median income (annual)	26,700		28,300	27,850	32,750
Lower quartile	15,650		16,350	15,900	18,150
Households below 60% GB median (= < £19,642)		35.2%	32.9%	34.0%	28.0%

For this measure, results at ward level are based on data for Conwy CBC strategic sub areas.

Benefits (DWP, May 2021)

There is a discontinuity in the benefits data, as Universal Credit is rolled out and starts to replace older awards systems. % is of all in that age group.

	Llansannan		Conwy CB	Wales	GB
	Number	%			
Children (aged 0-15)					
Disability Living Allowance (DLA)	15	4.5%	5.5%	4.7%	4.5%
Working age (aged 16-66)					
Universal Credit	65	4.9%	14.6%	13.9%	14.1%
Job Seekers Allowance (JSA)	0	-	0.5%	0.4%	0.4%
Employment & Support Allowance (ESA)	40	3.2%	5.9%	6.2%	4.3%
Disability Living Allowance (DLA)	0	-	0.3%	0.2%	0.6%
Personal Independence Payments (PIP)	65	4.9%	7.8%	8.1%	5.5%
Carer's Allowance	20	1.5%	3.0%	3.1%	2.4%
Pensioners (aged 67+)					
State Pension (Nov 2020)	390				
Pension Credit	40	9.7%	13.1%	14.6%	13.2%
Attendance Allowance	50	12.3%	17.2%	16.5%	13.8%
Disability Living Allowance (DLA)	10	2.6%	5.5%	8.6%	5.2%
Personal Independence Payments (PIP)	15	3.6%	4.0%	5.6%	3.6%
Carer's Allowance	10	2.0%	3.7%	4.1%	2.9%

Poverty and deprivation

Children in low income families - relative income poverty (DWP, 2019/2020)

	Llansannan		Conwy CB	Wales	GB
Children in in-work families	60	19.9%	17.4%	16.9%	16.7%
Children in out-of-work families	15	4.8%	7.4%	8.2%	6.7%
Total	75	24.7%	24.8%	25.0%	23.4%

As % all children aged 0-15. 'In work' is working 16 hrs a week or more. Relative income poverty = below 60% of UK median.

Welsh index of multiple deprivation (Welsh Government, 2019)

	Llansannan		Conwy CB	
Total LSOAs in area	1		71	
No. LSOAs in most deprived:	10%	25%	10%	25%
In each deprivation domain				
Overall Index	0	0	4	11
Income	0	0	5	14
Employment	0	0	5	15
Health	0	0	3	10
Education	0	0	1	9
Access to services	1	1	9	18
Housing	0	0	6	17
Community safety	0	0	0	4
Physical environment	0	1	6	16

Deprivation data shows how many lower super output areas (LSOAs) in the area are in the 10% and 25% most deprived LSOAs in Wales.

These statistics may be used under the terms of the Open Government Licence.

Produced by the Corporate Research and Information Unit, Conwy County Borough Council, November 2021

research.unit@conwy.gov.uk

<http://www.conwy.gov.uk/statistics>