

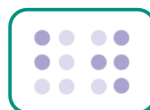
# INVESTING IN YOUR COMMUNITY

## Conwy Council Tax 2025/26



# CONTENTS

What your money is spent on each year	03
How we are funded	04
How we spend the funding	05
How this is invested by our main services	07
How your Council Tax is calculated	10
Band D Council Tax in each Town/Community	11
Reducing your Council Tax bill	12
Contact Us	13



**We are happy to provide this document in large print, audio, braille and British Sign Language.**

# What your money is spent on each year

2025/26

This example is based on a **Band D property council tax** of **£1,888.51** per year.

## Education, Schools & Youth Services



£594.81

## Social Care



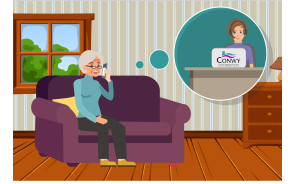
£617.36

## Interest Costs & Asset Repayment



£143.28

## Council Tax Reduction Scheme & Business Rate Relief



£83.77

## Corporate Support Services



£55.41

## Fire Service & National Park payments



£55.70

## Emptying Bins & Recycling



£33.06

## Roads & Infrastructure



£28.64

## School Transport



£46.66

## Public Protection, Licensing & Environmental Health



£24.86

## Modernisation & Corporate Fees



£32.56

## Tourism, Theatres, Conferences & Events



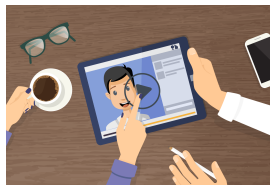
£9.82

## Managing Council Buildings



£10.87

## Democracy



£14.07

## Waste to Energy Site/Disposal



£14.51

## Libraries



£15.37

## Street Cleaning



£15.14

## Swimming Pools & Leisure Centres



£18.95

## Homelessness Prevention



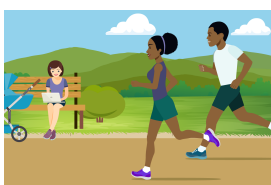
£38.94

## Supporting Businesses & the Community



£9.68

## Parks & Gardens



£9.93

## Revenue and Benefits & Financial Assessment Team



£10.97

## Countryside Management



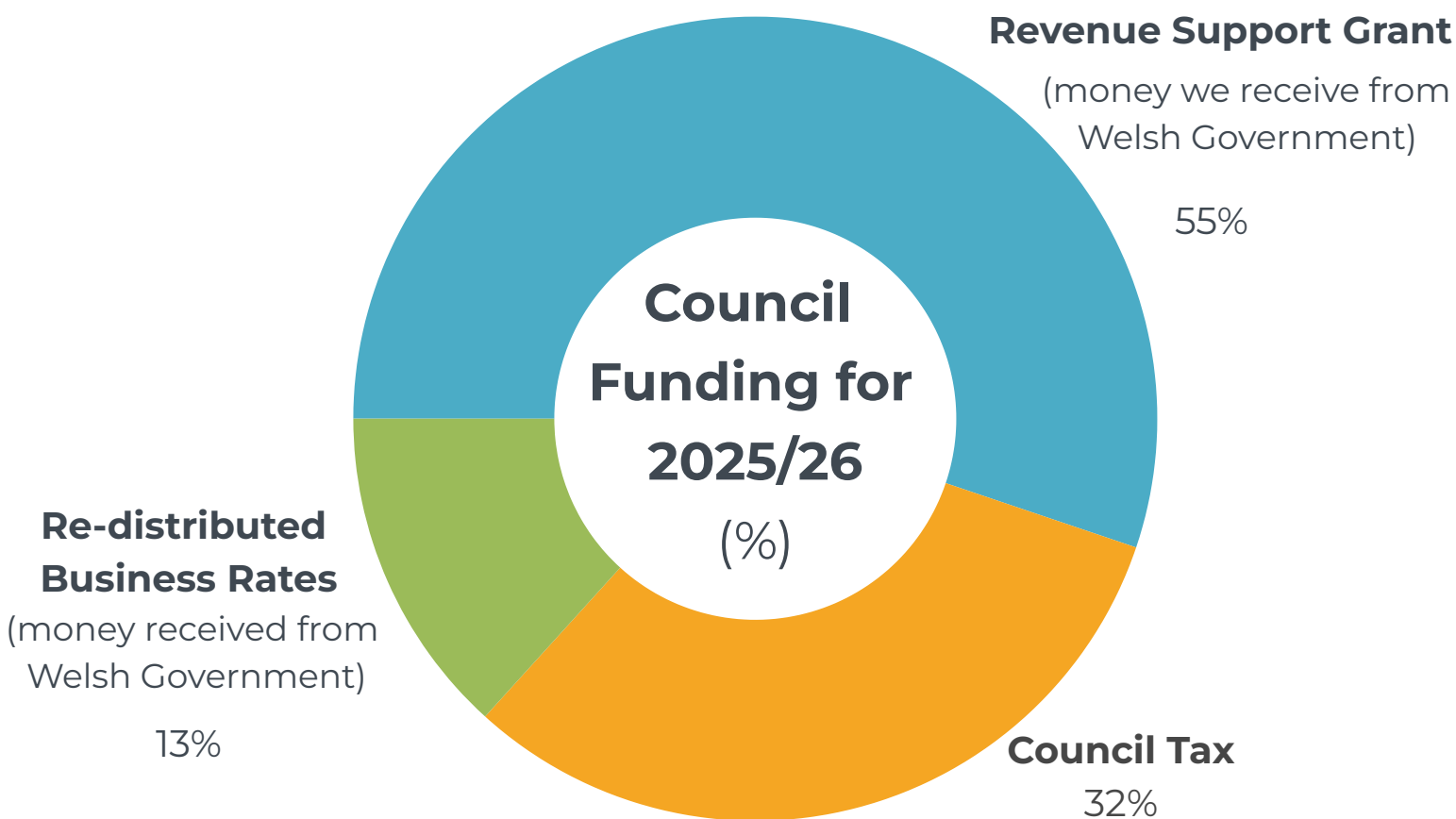
£4.15

# How we are funded

Did you know only



of our funding comes from Council Tax?

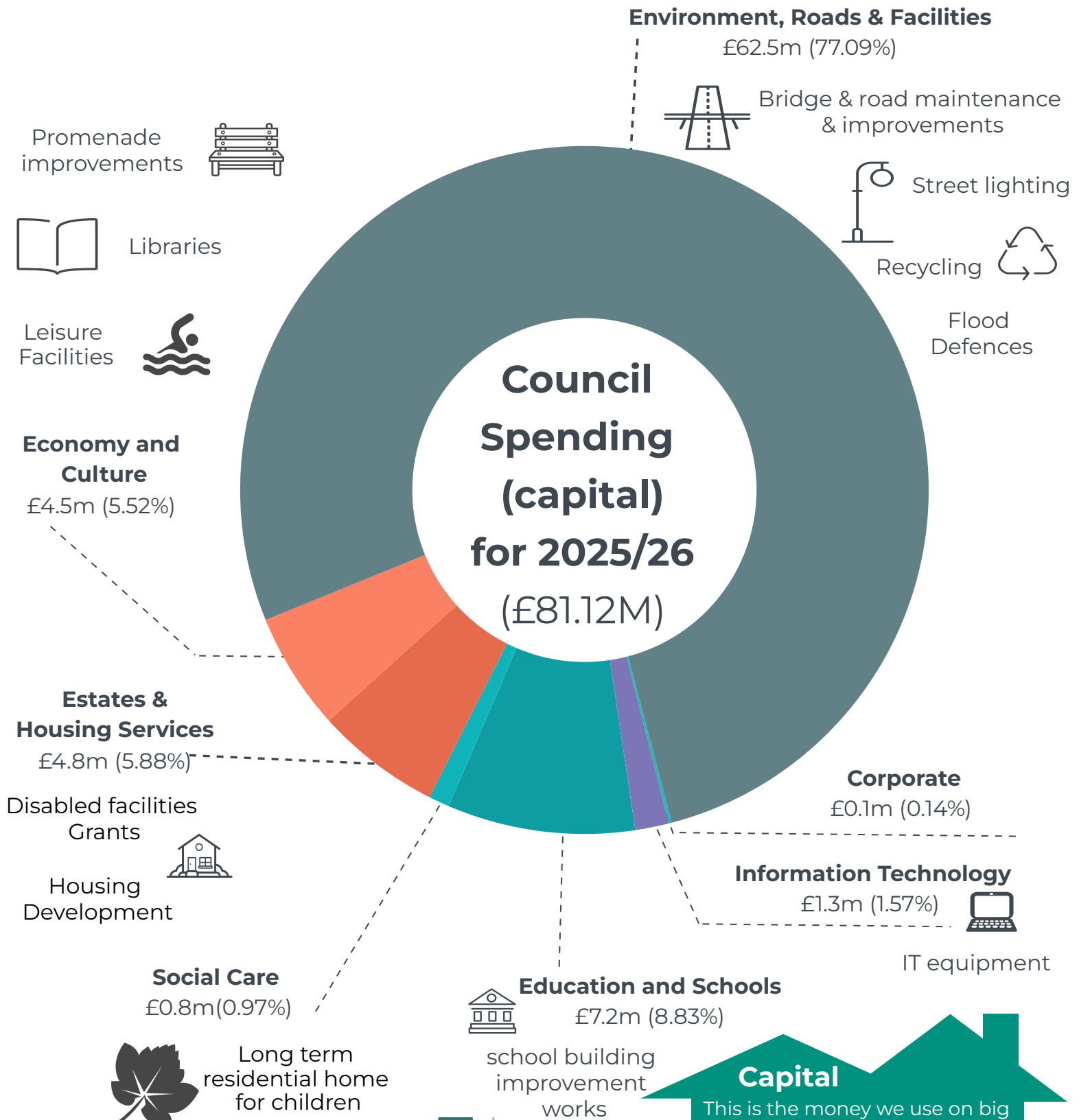


Revenue Support Grant	£176.6m
Amount raised from Council Tax Payers	£100.9m
Re-distributed Business Rates	£42.4m
<b>Total</b>	<b>£319.9m</b>



# How we spend the capital funding

For the financial year April 2025 to March 2026 the Council has a **capital budget** of **£81.12 million** to invest in the community. Here are some examples -

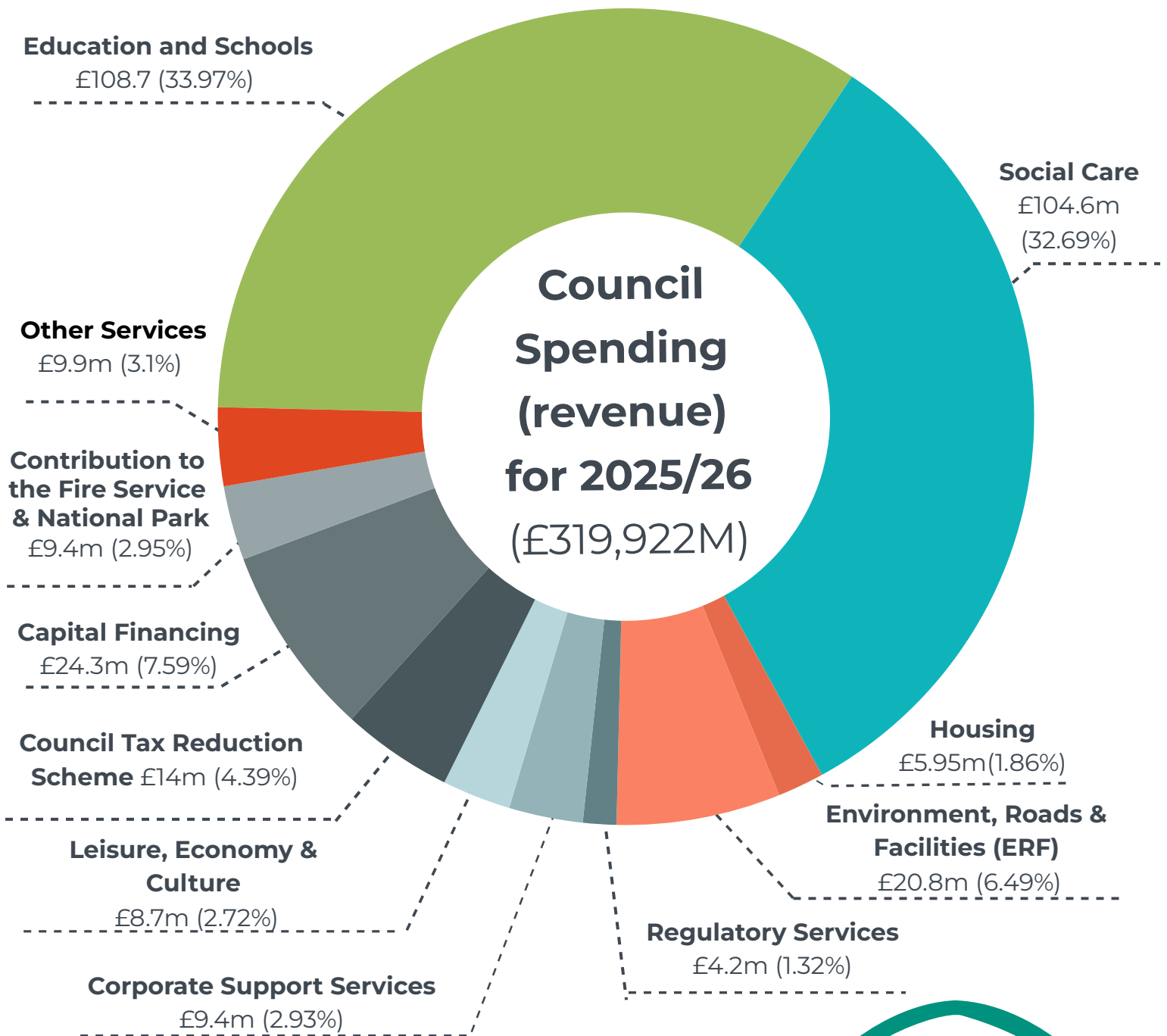


**Capital**  
 This is the money we use on big investments - such as roads, buildings, schools, re-cycling wagons and leisure centres etc.



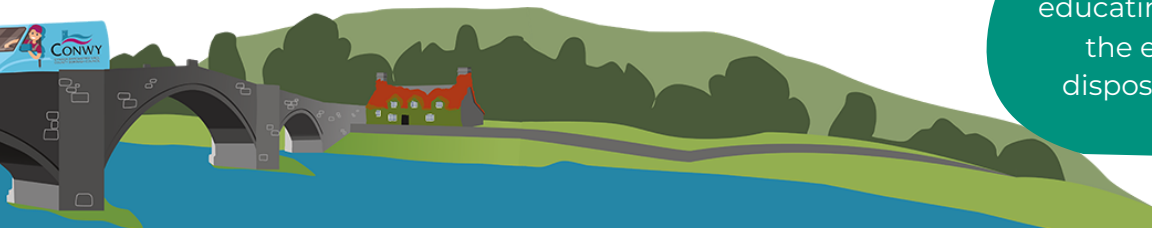
# How we spend the revenue funding

For the financial year April 2025 to March 2026 the Council has a **revenue budget** of **£319,922 million** to invest in the community -

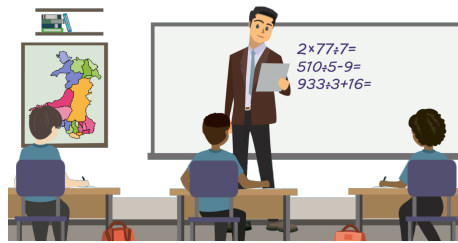


## Revenue

This is the money we use to pay for your day to day services - such as educating your children, caring for the elderly and collecting & disposing of your recycling and waste.

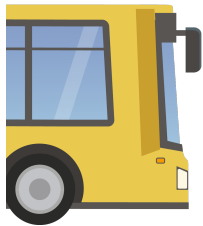


# How this is invested by our main services



**Schools Budget**

81%



**Home to School Transport**  
7%



**Education & Schools Support**  
12%



**Family Support & Intervention**  
2.7%

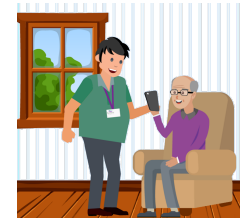


**Supporting Looked After Children**  
16.6%

**Youth Justice**  
0.2%



**Business Support & Transformation**  
4.5%



**Supporting Vulnerable People**  
9.8%

**Community Well-being**  
0.7%

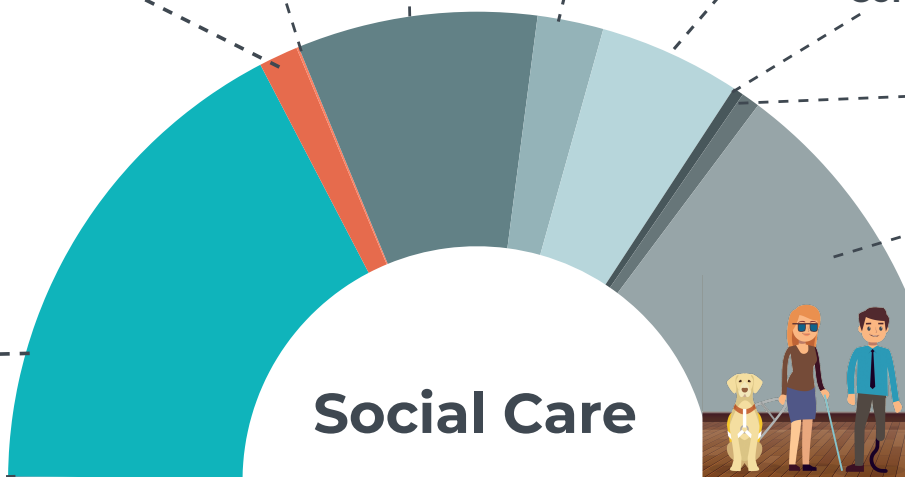
**Quality Standards & Commissioning**  
1.3%

**Disability Support**  
29.5%

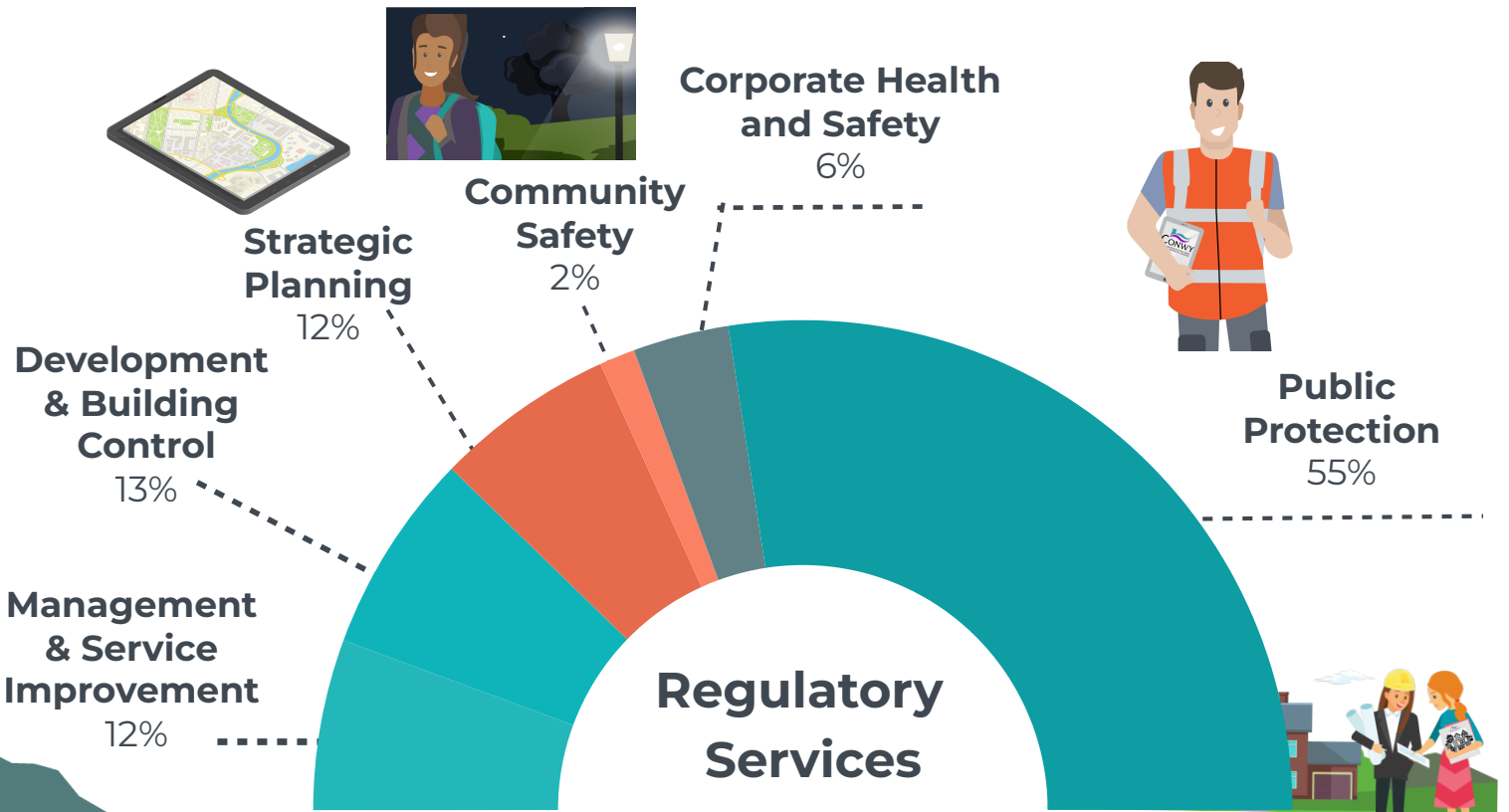
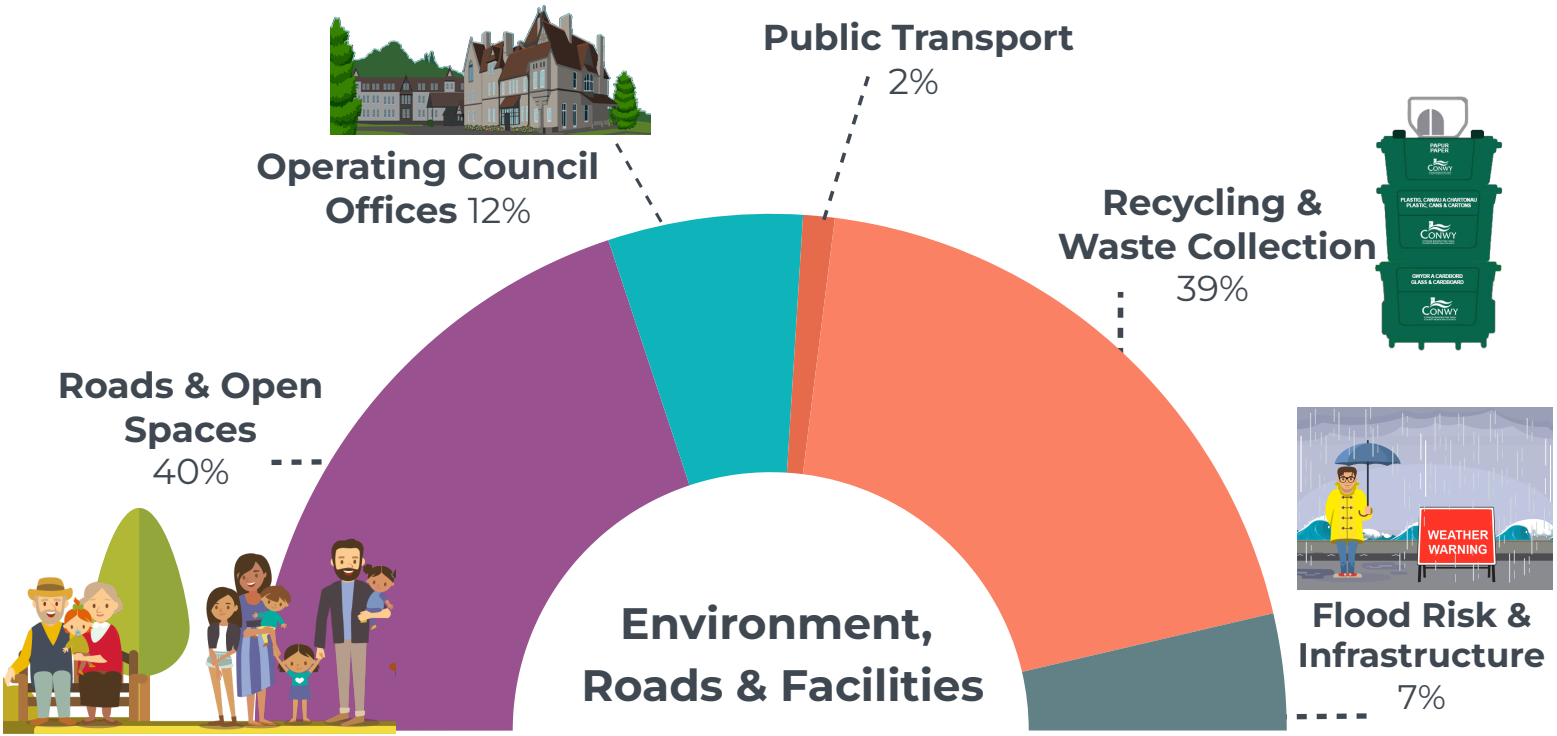


**Older People & Hospital Social Work**  
34.4%

**Safeguarding**  
0.3%

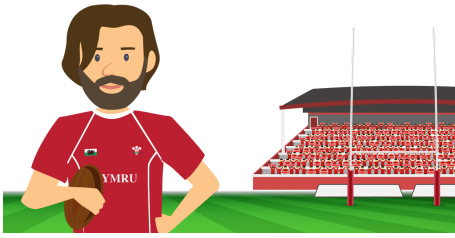


# How this is invested by our main services





# How this is invested by our main services



**Leisure Facilities**

37%



**Business & Tourism**

14%

**Leisure,  
Economy &  
Culture**

**Marketing &  
Communications**

4%

**Culture & Information**

30%

**Venues, Events & Estate  
Management**

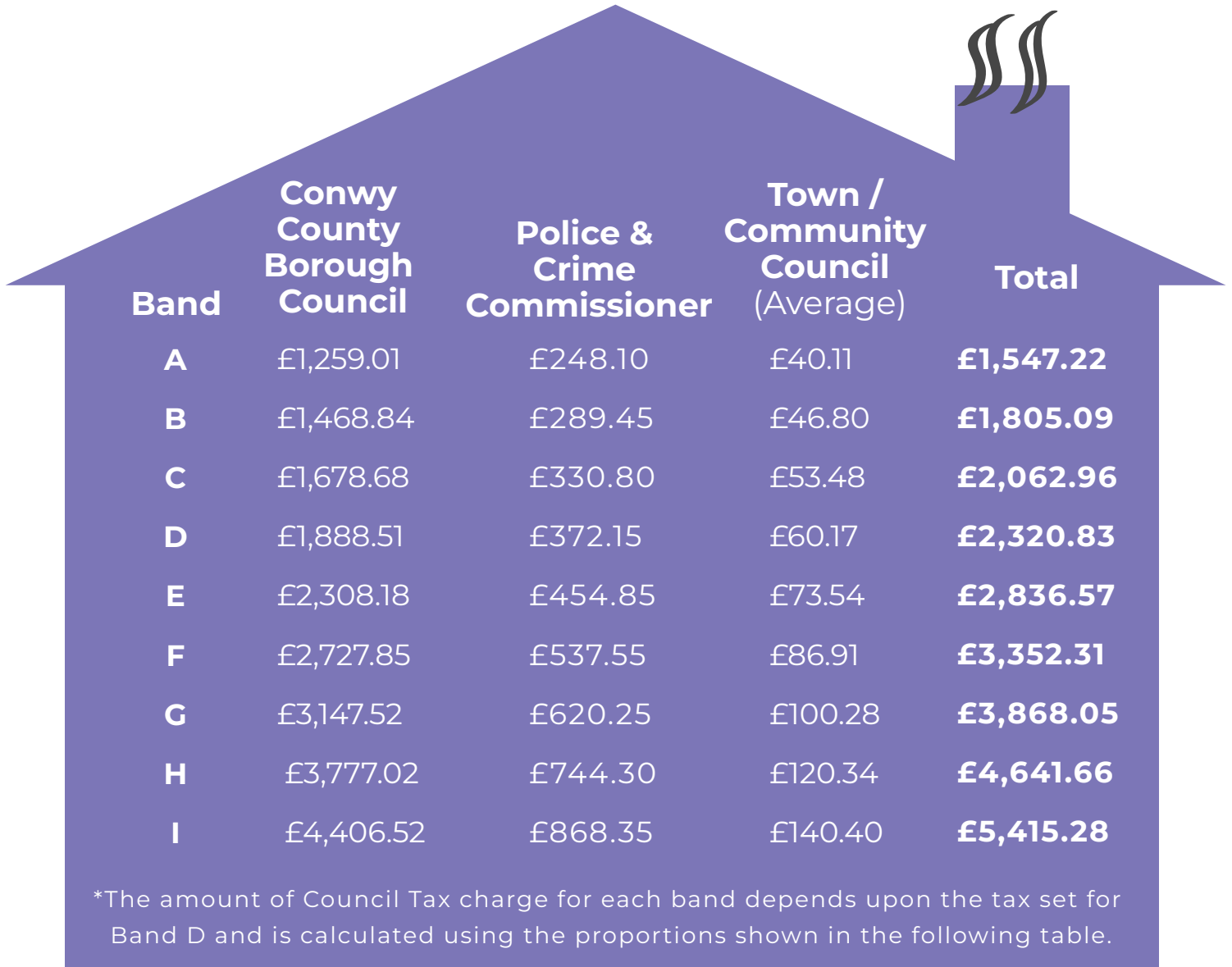
15%



# How your Council Tax is calculated

The Council Tax you pay depends on the valuation your property. Your property will have been allocated a band based on the value of your house as at 1 April 2003.

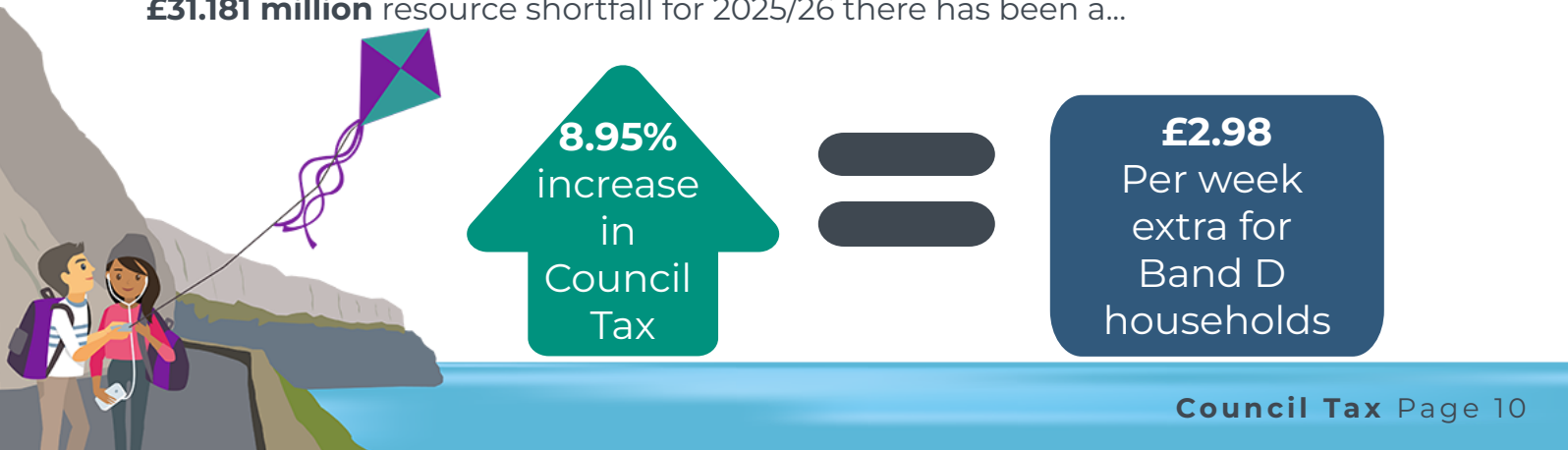
Not all Council Tax collected pays for council services, it also supports [North Wales Police & Crime Commissioner](#) and individual Town and Community Councils, and North Wales Fire Authority. The 8.95% Council Tax rise for 2025/2026 is made up of an increase of 8.27% for Conwy and 0.68% for the North Wales Fire Authority.



Band	Conwy County Borough Council	Police & Crime Commissioner	Town / Community Council (Average)	Total
A	£1,259.01	£248.10	£40.11	<b>£1,547.22</b>
B	£1,468.84	£289.45	£46.80	<b>£1,805.09</b>
C	£1,678.68	£330.80	£53.48	<b>£2,062.96</b>
D	£1,888.51	£372.15	£60.17	<b>£2,320.83</b>
E	£2,308.18	£454.85	£73.54	<b>£2,836.57</b>
F	£2,727.85	£537.55	£86.91	<b>£3,352.31</b>
G	£3,147.52	£620.25	£100.28	<b>£3,868.05</b>
H	£3,777.02	£744.30	£120.34	<b>£4,641.66</b>
I	£4,406.52	£868.35	£140.40	<b>£5,415.28</b>

\*The amount of Council Tax charge for each band depends upon the tax set for Band D and is calculated using the proportions shown in the following table.

There is an increase in demand for our statutory services. To contribute to the **£31.181 million** resource shortfall for 2025/26 there has been a...



# Band D Council Tax in each Town / Community

Treth y Cyngor Band D ym mhob Tref/Cymuned / Band D Council Tax in Each Town/Community

Bandiau/Banding

Taliadau Cyngorau Tref/Cymuned Town/Community Council Precepts		CYNGOR TREF/CYMUNED TOWN/COMMUNITY COUNCIL	Treth Sylfaenol Council Tax Base	Cyngor Sir Bwrdeistref Conwy Conwy County Borough Council	Comisiynydd Heddlu a Throsedd G.Cymru Police & Crime Commissioner N.Wales	Cyngorau Tref/Cymuned Town/Community Council	Treth y cyngor yn ôl BAND D Council Tax at BAND D	Anedd yn Property in	Byddwch yn Talu You Pay
2024/25 £	2025/26 £			£	£	£	£		
348,286	366,459	Abergele	5,183.32	1,888.51	372.15	70.70	2,331.36	BAND A	6/9fed o daliad Band D yn eich Cymuned 6/9ths of the Band D Charge in your Community
530,600	554,650	Bae Colwyn / Bay of Colwyn	12,144.67	1,888.51	372.15	45.67	2,306.33		
0	0	Betws-y-Coed	261.42	1,888.51	372.15	0.00	2,260.66		
13,000	18,000	Betws-yn-Rhos	522.29	1,888.51	372.15	34.46	2,295.12	BAND B	7/9fed o daliad Band D yn eich Cymuned 7/9ths of the Band D Charge in your Community
4,720	4,850	Bro Garmon	332.43	1,888.51	372.15	14.59	2,275.25		
11,431	16,094	Bro Machno	351.49	1,888.51	372.15	45.79	2,306.45		
10,000	11,000	Caerhun	691.56	1,888.51	372.15	15.91	2,276.57	BAND C	8/9fed o daliad Band D yn eich Cymuned 8/9ths of the Band D Charge in your Community
3,500	4,000	Capel Curig	106.82	1,888.51	372.15	37.45	2,298.11		
10,000	12,000	Cerrigydrudion	312.95	1,888.51	372.15	38.34	2,299.00		
335,833	461,827	Conwy	7,777.39	1,888.51	372.15	59.38	2,320.04	BAND D	Y taliad yn eich cymuned a ddangosir yn y tabl The charge for your community in the table
2,923	6,352	Dolgarrog	166.20	1,888.51	372.15	38.22	2,298.88		
20,000	21,000	Dolwyddelan	257.14	1,888.51	372.15	81.67	2,342.33		
8,345	9,500	Eglwysbach	472.23	1,888.51	372.15	20.12	2,280.78	BAND E	11/9fed o daliad Band D yn eich Cymuned 11/9ths of the Band D Charge in your Community
4,922	5,415	Henryd	409.41	1,888.51	372.15	13.23	2,273.89		
7,100	6,500	Llanddoged a/and Maenan	300.25	1,888.51	372.15	21.65	2,282.31		
28,524	29,724	Llanddulas a/and Rhyd-y-Foel	812.15	1,888.51	372.15	36.60	2,297.26	BAND F	13/9fed o daliad Band D yn eich Cymuned 13/9ths of the Band D Charge in your Community
548,476	657,428	Llandudno	9,677.09	1,888.51	372.15	67.94	2,328.60		
145,000	165,000	Llanfairfechan	1,533.67	1,888.51	372.15	107.59	2,368.25		
12,896	21,959	Llanfairtalhaiarn	472.26	1,888.51	372.15	46.50	2,307.16	BAND G	15/9fed o daliad Band D yn eich Cymuned 15/9ths of the Band D Charge in your Community
7,000	7,000	Llanfihangel Glyn Myfyr	96.11	1,888.51	372.15	72.83	2,333.49		
10,226	14,570	Llangernyw	500.67	1,888.51	372.15	29.10	2,289.76		
4,410	5,410	Llangwm	221.40	1,888.51	372.15	24.44	2,285.10	BAND H	21/9fed o daliad Band D yn eich Cymuned 21/9ths of the Band D Charge in your Community
9,000	9,000	Llanefydd	267.49	1,888.51	372.15	33.65	2,294.31		
129,860	136,551	Llanrwst	1,279.68	1,888.51	372.15	106.71	2,367.37		
30,000	30,000	Llansanffraid Glan Conwy	1,144.75	1,888.51	372.15	26.21	2,286.87	BAND I	Dwywaith cyfanswm taliad Band D yn eich Cymuned Twice the Band D Charge in your Community
20,000	22,000	Llansannan	608.44	1,888.51	372.15	36.16	2,296.82		
26,506	26,531	Llysfäen	926.66	1,888.51	372.15	28.63	2,289.29		
19,626	24,533	Mochedre	697.39	1,888.51	372.15	35.18	2,295.84	BAND A	6/9fed o daliad Band D yn eich Cymuned 6/9ths of the Band D Charge in your Community
180,715	198,787	Penmaenmawr	1,890.72	1,888.51	372.15	105.14	2,365.80		
5,330	5,930	Pentrefoelas	143.91	1,888.51	372.15	41.21	2,301.87		
253,549	322,646	Towyn / Bae Cinnel/Kinmel Bay	3,270.91	1,888.51	372.15	98.64	2,359.30	BAND B	7/9fed o daliad Band D yn eich Cymuned 7/9ths of the Band D Charge in your Community
24,985	28,608	Trefriw	393.95	1,888.51	372.15	72.62	2,333.28		
4,400	4,700	Ysbyty Ifan	87.79	1,888.51	372.15	53.54	2,314.20		
<b>2,771,163</b>	<b>3,208,023</b>	<b>CYFANSWM/TOTAL</b>	<b>53,314.61</b>	<b>1,888.51</b>	<b>372.15</b>		<b>2,320.83</b>	<b>BAND I</b>	<b>21/9fed o daliad Band D yn eich Cymuned 21/9ths of the Band D Charge in your Community</b>
CYFARTELEDD / AVERAGE				1,888.51	372.15	60.17	2,320.83		

Ar gyfer anheddau ym Band D yn unig y mae'r tabl uchod. Os yw eich anedd chi mewn band arall, deilyddiwch y tabl i gantod beth fydd eich bil treth. Amcangyfrif o'r incwm a dderbynnir am bob £1 o Dreth y Cyngor yr Dreth Sylfaenol. Mynegir hyn fel "cyfwerth â Band D", gan gymryd i ystyriaeth nifer yr anheddau o fewn pob band, ym mhob ardal gymunedol.

If your property falls within another property band other than Band D the information at the right of the table will help you calculate how much you will pay. Alternatively look at your council tax bill. The Tax Base is the estimated income that will be received for each £1 of Council Tax. It is expressed as a "Band D equivalent" and takes into account the number of properties within each band, in each community area.

If your property falls within another property band other than Band D the information at the right will help you calculate how much you will pay. Alternatively look at your council tax bill. The Tax Base is the estimated income that will be received for each £1 of Council Tax. It is expressed as a "Band D equivalent" and takes into account the number of properties within each band, in each community area.

- A** - 6/9ths of the Band D Charge in your Community
- B** - 7/9ths of the Band D Charge in your Community
- C** - 8/9ths of the Band D Charge in your Community
- D** - The charge for your community in the table
- E** - 11/9ths of the Band D Charge in your Community
- F** - 13/9ths of the Band D Charge in your Community
- G** - 15/9ths of the Band D Charge in your Community
- H** - Twice the Band D Charge in your Community
- I** - 21/9ths of the Band D Charge in your Community

# Reducing your Council Tax bill

## Reductions & Benefits

If you need help or advice about Council Tax Reduction or Housing Benefit you can contact the Revenue and Benefit Service by either emailing [benefits@conwy.gov.uk](mailto:benefits@conwy.gov.uk) or calling **01492 576491**.

If you already receive a reduction in your bill through a discount, you do not need to apply again.

Pension Credit gives you extra money to help with your living costs if you're over State Pension age and on a low income. [Pension Credit](#) can also help with housing costs such as ground rent or service charges.

## Benefit Fraud

Benefit fraud is a crime so if you know someone who is cheating the system call the 24 hour free fraud line in confidence on **0800 854 440** or visit [www.gov.uk/report-benefit-fraud](http://www.gov.uk/report-benefit-fraud).

## Discounts or Exemptions

If you believe you may be entitled to any discounts or exemptions, please visit [www.conwy.gov.uk/council-tax](http://www.conwy.gov.uk/council-tax) or contact the Council Tax unit on [counciltax@conwy.gov.uk](mailto:counciltax@conwy.gov.uk) or **01492 576607**.

You may qualify for a council tax reduction if you or someone who lives with you...



has a disability & your home has been adapted to meet their needs



is severely mentally impaired



is a care worker on low pay, employed for at least 24 hours per week & living where the care is given



a person caring for someone on state benefits (more than 35 hours per week) who is not their spouse, partner or child under 18



is a full time student, student nurse, apprentice or Youth Training Trainee



is 18 or 19 years old who is at or has just left school



are members of certain religious communities that meet specified criteria



is in prison (except those in prison for non payment of Council Tax or a fine)



are in the Armed Forces & own a second home in Wales



is residing in hospital or a care home



are staying in hostels or night shelters



Or live on your own



Or you are on a low income

**Conwy has discretionary power to vary discounts in exceptional circumstances; for example, following flooding, under section 13a of the Local Government Finance Act 1992**

## Universal Credit

The Department for Work & Pensions have been nationally rolling out Universal Credit Full Service since May, 2016.

Universal Credit Managed Migration commenced in Conwy during 2024 and will continue during 2025/26. When it's time for you to move over to Universal Credit the Department for Works and Pensions will write to you.

Click on the following link for more information [www.conwy.gov.uk/UniversalCredit](http://www.conwy.gov.uk/UniversalCredit)

For information on how we use your data, visit

[www.conwy.gov.uk/council-tax-privacy-notice](http://www.conwy.gov.uk/council-tax-privacy-notice)



There are a number of properties on which you do not have to pay Council Tax. They include properties that are -

- Unfurnished (exempt for 6 months)
- Unoccupied & owned by a charity (exempt for 6 months)
- Unoccupied & undergoing or in need of structural repair or major alterations (exempt for 12 months)
- Unoccupied & are waiting for probate or letters of administration to be granted (exempt for up to 6 months after)
- Left empty by someone who has gone into prison, hospital or residential care home
- Left empty by someone who has moved in order to provide or receive personal care
- Left empty by students
- Repossessed
- The responsibility of a bankrupt's trustee
- Empty because their occupation is forbidden by law

However where a property has been left empty for longer than 6 months or is classed as a second home no discount will apply.

An additional 150% Council Tax Premium for Second Homes & a 200% premium for Long-term Empty Homes that have been empty for 5 years or less will be applied from 1st April 2025. For properties empty longer than 5 years a 300% Premium will be applied from 1st April 2025

# BE DIGITAL

Conwy is modernising

Did you know Conwy offers the following services?

## E-Billing

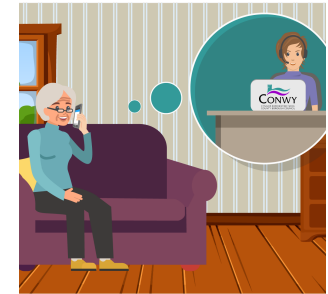
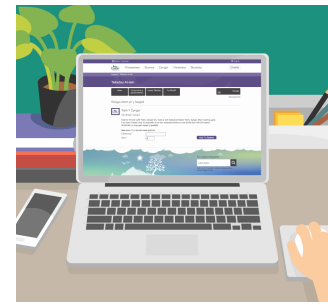
Conwy County Borough Council can now offer you the option to receive your Council Tax bill by e-mail rather than through the post.

Visit [www.conwy.gov.uk/e-billing](http://www.conwy.gov.uk/e-billing) to find out more

## Direct Debit

Direct Debit is the easiest method of payment for Council Tax and is the preferred option for more than 88% of the Council Tax payers in the Authority

Visit [www.conwy.gov.uk/direct-debit](http://www.conwy.gov.uk/direct-debit) to find out more



[www.conwy.gov.uk/council-tax](http://www.conwy.gov.uk/council-tax)



[counciltax@conwy.gov.uk](mailto:counciltax@conwy.gov.uk)



01492 576607



**Textphone:** Dial 18001 + the number of the service you want to contact

### Write to Us

PO Box 1  
Colwyn Bay  
LL29 0GG

### Visit Us

Coed Pella  
Conwy Road  
Colwyn Bay  
LL29 7AY



cyngor ar  
bopeth

citizens  
advice

Conwy

WEDI'I YRRU GAN  
**FFYNIANT  
— BRO —**

POWERED BY  
**LEVELLING  
— UP —**

**Helpu chi i ddod o hyd i ffordd ymlaen, beth bynnag yw'r problem.** Helping you find a way forward, **whatever** the problem.

**CYSYLLTWCH Â NI HEDDIW! CONTACT US TODAY!**

01745 828 705 - Llandudno Town Hall - LL30 2UP

[advicecyngor@caconwy.org.uk](mailto:advicecyngor@caconwy.org.uk) | [citizensadvice.org.uk/local/conwy/](http://citizensadvice.org.uk/local/conwy/)

**maethu  
cymru** | **foster  
wales**

Conwy

01492 576350

[maethu@conwy.gov.uk](mailto:maethu@conwy.gov.uk)  
[fostering@conwy.gov.uk](mailto:fostering@conwy.gov.uk)

[conwy.maethucymru.llyw.cymru](http://conwy.maethucymru.llyw.cymru)  
[conwy.fosterwales.gov.wales](http://conwy.fosterwales.gov.wales)



  
**CONWY**

CYNGOR BWRDEISTREF SIROL  
COUNTY BOROUGH COUNCIL

**MAE SWYDDOGION TAI GWAG Y CYNGOR YN ANNOG POBL SYDD AG EIDDO GWAG I GYSYLLTU Â NHW I GAEL GWYBOD MWY AM Y GWAHANOL GYNLLUNIAU SYDD AR GAEL I HELPŪ I DDOD A'R TAI HYN YN ŌL I DDEFNYDD.**

**MAE YNA GRANTIAU O HYD AT £25,000.00 AR GAEL FEL RHAN O GYNLLUN LESIO CYMRU A BENTHYCIADAU O HYD AT £35,000.00 AR GAEL GAN TROI TAI'N GARTREFI.**

**I GAEL RHAGOR O WYBODAETH GALL PERCHNOGION EIDDO FYND I WEFAN Y CYNGOR, NEU GYSYLLTU Â SWYDDOGION TAI GWAG Y CYNGOR AR [01492 574235](tel:01492574235) NEU [EMPTYHOMES@CONWY.GOV.UK](mailto:EMPTYHOMES@CONWY.GOV.UK)**

**THE COUNCIL'S EMPTY HOMES OFFICERS ARE ENCOURAGING PEOPLE WITH EMPTY PROPERTIES TO GET IN TOUCH TO FIND OUT ABOUT THE DIFFERENT SCHEMES AVAILABLE TO HELP BRING THESE HOMES BACK INTO USE.**

**THERE ARE GRANTS OF UP TO £25,000.00 AVAILABLE AS PART OF LEASING SCHEME WALES AND HOUSES INTO HOMES LOANS OF UP TO £35,000.00.**

**FOR MORE INFORMATION, PROPERTY OWNERS CAN VISIT THE COUNCIL WEBSITE, OR CONTACT THE COUNCIL'S EMPTY HOMES OFFICERS [01492 574235](tel:01492574235) OR [EMPTYHOMES@CONWY.GOV.UK](mailto:EMPTYHOMES@CONWY.GOV.UK)**



[www.conwy.gov.uk/TaiADigartrefedd](http://www.conwy.gov.uk/TaiADigartrefedd)

[www.conwy.gov.uk/HousingAndHomelessness](http://www.conwy.gov.uk/HousingAndHomelessness)



**CONWY**  
CYNGOR BWRDEISTREF SIROL  
COUNTY BOROUGH COUNCIL