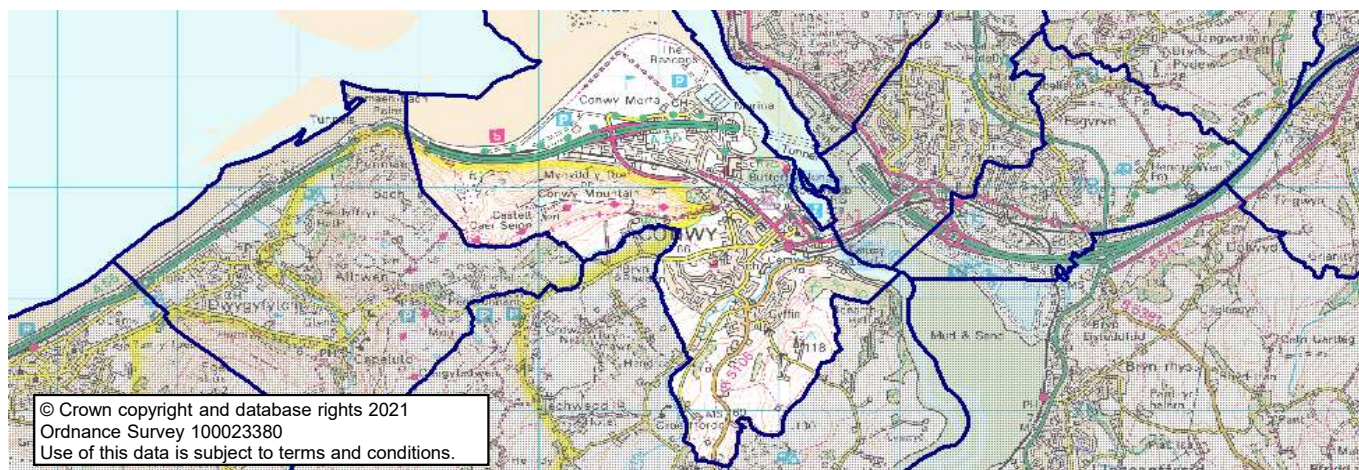


Conwy County Borough Council's ward profiles 2021

Conwy

Map



These statistics may be used under the terms of the Open Government Licence.

Produced by the Corporate Research and Information Unit, Conwy County Borough Council, November 2021

research.unit@conwy.gov.uk

<http://www.conwy.gov.uk/statistics>

Population characteristics

Population, age and gender 2020 (ONS MYE)

	Conwy		Conwy CB	Wales	GB
	Number	%	%	%	%
Mid-year population 2010	4,100	Change	Change	Change	Change
Mid-year population 2020	5,150	26.1%	3.1%	3.9%	6.9%
Males	2,450	47.6%	48.7%	49.3%	49.4%
Females	2,700	52.4%	51.3%	50.7%	50.6%
Aged 0-15	850	16.8%	16.0%	17.8%	18.9%
Aged 16-29	700	13.6%	13.5%	17.5%	17.2%
Aged 30-44	800	15.4%	14.8%	17.5%	19.4%
Aged 45-64	1,550	30.0%	27.9%	26.2%	25.8%
Aged 65+	1,250	24.1%	27.9%	21.1%	18.7%
Population density 2020 (persons/ha)		8.52	1.05	1.53	4.32

Population characteristics (Census 2011)

	Conwy		Conwy CB	Wales	E & W
	Number	%			
Born in Wales	2,294	56.4%	54.4%	72.7%	4.9%
Born outside the UK	141	3.5%	4.3%	5.5%	13.4%
Ethnicity - white British	3,918	96.4%	95.4%	93.2%	80.5%
Other white	79	1.9%	2.3%	2.4%	5.5%
Mixed ethnic group	28	0.7%	0.8%	1.0%	2.2%
Other ethnic groups	40	1.0%	1.5%	3.4%	11.8%
Religion - Christian	2,600	64.0%	64.7%	57.6%	59.3%
Other religion	54	1.3%	1.5%	2.7%	8.4%
No religion	1,093	26.9%	26.1%	32.1%	25.1%
(of persons aged 3+)					
Speak Welsh	1,134	28.7%	27.4%	19.0%	-
No skills in Welsh	2,134	54.0%	60.6%	73.3%	-

Health

Health and provision of care (Census 2011)

	Conwy		Conwy CB	Wales	E & W
	Number	%			
People with limiting long term illness	832	20.5%	24.2%	22.7%	17.9%
People providing unpaid care	468	11.5%	11.8%	12.1%	10.3%

Conwy County Borough Council's ward profiles 2021

Conwy

Housing and living arrangements

Households (Census 2011)

	Conwy		Conwy CB	Wales	E & W
	Number	%			
Total households	1,868		51,177	1,302,676	23,366,044
Household composition					
All one person household	664	35.5%	33.8%	30.8%	30.2%
- one person; aged 65+	304	16.3%	17.1%	13.7%	12.4%
All households with dependent children	468	25.1%	24.5%	28.2%	29.1%
- lone parents with dependents	119	6.4%	6.2%	7.5%	7.2%
All households of only pensioners	495	26.5%	29.2%	22.9%	20.9%
Population in private households	4,041	99.4%	97.7%	98.3%	98.2%
Average household size		2.16	2.20	2.31	2.36
Household facilities					
No central heating	72	3.9%	3.6%	2.3%	2.7%
Overcrowded	62	3.3%	4.3%	5.2%	8.5%
Average rooms per household		5.6	5.6	5.7	5.4
No car	370	19.8%	21.7%	22.9%	25.6%
Tenure					
Owner occupied	1,282	68.6%	70.1%	67.8%	64.3%
Rented from social landlord	244	13.1%	11.6%	16.5%	17.6%
Other rented	342	18.3%	18.3%	15.7%	18.0%

Dwellings by council tax band (VOA, March 2021)

	Conwy		Conwy CB	Wales
	Number	%		
Total dwellings	2,240	100%	57,720	1,458,100
Band A	170	7.6%	9.3%	14.5%
Band B	150	6.7%	14.4%	20.9%
Band C	670	30.0%	26.9%	21.8%
Band D	610	27.4%	20.5%	16.2%
Band E	350	15.7%	15.9%	13.5%
Band F	200	9.0%	8.7%	8.2%
Band G	90	4.0%	3.3%	3.7%
Band H	-	-	0.7%	0.9%
Band I	-	-	0.3%	0.4%

House prices (Land Registry, 2020; CACI PayCheck, 2020)

	Conwy		Conwy CB		Wales		E & W	
	£		£		£		£	
Median (All house types)	£	187,000	£	175,000	£	165,000	£	244,950
Lower quartile (All house types)	£	150,000	£	131,000	£	117,000	£	156,000
Ratio income:houseprice (median)		5.8		5.9		5.7		7.3
Ratio income:houseprice (lower quartile)		7.9		7.6		7.0		8.3

For this measure, results at ward level are based on data for Conwy CBC strategic sub areas.

Housing related benefits (DWP, August 2021)

	Conwy		Conwy CB	Wales	GB
	Number	%			
Total claimants	365	100%	10,060	280,630	5,733,155
- housing benefit	200	54.0%	54.0%	51.9%	48.2%
- Universal Credit housing element	170	46.0%	46.0%	48.1%	51.8%
- private rented	145	38.1%	48.5%	34.7%	37.6%
- social rented	220	56.9%	50.9%	64.8%	61.5%
- households with children	145	39.2%	34.2%	36.7%	38.2%

Characteristics for housing benefit only

- single pensioner (% HB)	80	40.9%	35.3%	32.9%	33.9%
---------------------------	----	-------	-------	-------	-------

These statistics may be used under the terms of the Open Government Licence.

Produced by the Corporate Research and Information Unit, Conwy County Borough Council, November 2021

research.unit@conwy.gov.uk

<http://www.conwy.gov.uk/statistics>

Conwy County Borough Council's ward profiles 2021

Conwy

Community safety

Crime incidences (North Wales Police)

	Conwy		Conwy CB	Wales	E & W
(year end 31st March)	Number	Rate*			
All crime incidences 2020/21	275	53.28	82.26	72.87	78.03
Violence against the person	147	28.48	40.57	30.04	30.09
Theft & handling	26	5.04	9.22	9.47	11.80
Criminal damage & arson	33	6.39	9.20	8.71	8.04

*annual crime rate per 1,000 population

Economy and employment

Industry of employment (Census 2011)

	Conwy		Conwy CB	Wales	E & W
	Number	%			
All in employment (aged 16-74)	1,857		50,093	1,363,615	26,526,336
Agriculture, forestry & fishing	16	0.9%	2.1%	1.7%	0.9%
Mining, quarrying, energy, water	33	1.8%	1.6%	1.9%	1.5%
Manufacturing	87	4.7%	4.9%	10.5%	8.9%
Construction	180	9.7%	8.2%	8.2%	7.7%
Wholesale & retail	306	16.5%	17.0%	15.6%	15.9%
Transport & storage	65	3.5%	3.7%	3.9%	5.0%
Accommodation & food services	212	11.4%	9.9%	6.2%	5.6%
Communication, finance, property	83	4.5%	5.2%	6.6%	9.7%
Professional, scientific, technical	97	5.2%	4.6%	4.3%	6.6%
Administrative & support services	69	3.7%	3.7%	4.0%	4.9%
Public administration & defence	145	7.8%	7.1%	7.9%	6.0%
Education	179	9.6%	10.2%	10.1%	9.9%
Health & social work	284	15.3%	16.7%	14.5%	12.5%
Other	101	5.4%	5.1%	4.5%	5.0%
Work mainly at or from home	118	6.4%	7.2%	5.4%	5.4%
No qualifications (all aged 16+)	750	22.0%	25.6%	25.9%	22.7%
Level 4+ qualification	954	28.0%	25.5%	24.5%	27.2%

Social class (Census, 2011)

	Conwy		Conwy CB	Wales	E & W
	Number	%			
All aged 16-74	3,008		81,906	2,245,166	41,126,540
Managerial & professional	960	31.9%	29.0%	27.4%	31.1%
Skilled	937	31.2%	31.8%	29.4%	29.1%
Part / unskilled	811	27.0%	27.9%	28.8%	25.2%
Students & other	300	10.0%	11.3%	14.5%	14.6%

Unemployment (claimant count) (NOMIS, 2021)

	Conwy		Conwy CB	Wales	GB
	Number	%			
October 2021	95	3.1%	4.6%	4.3%	4.8%
July 2021 (previous quarter)	100	3.4%	5.1%	4.8%	5.4%
October 2020 (previous year)	135	4.5%	6.3%	5.7%	6.2%
October 2016 (5 years ago)	45	1.5%	2.1%	2.2%	1.8%
Claimants aged 16-24 (Oct-21)*	15	-	17.4%	19.3%	17.0%
Claimants aged 50+ (Oct 21)*	30	-	29.8%	23.1%	24.3%

* Rounded to nearest 5. % is of all claimants.

These statistics may be used under the terms of the Open Government Licence.

Produced by the Corporate Research and Information Unit, Conwy County Borough Council, November 2021

research.unit@conwy.gov.uk

<http://www.conwy.gov.uk/statistics>

Conwy County Borough Council's ward profiles 2021

Conwy

Income and benefits

Household income (CACI PayCheck, 2021)

	Conwy		Conwy CB	Wales	GB
	£	%			
Median income (annual)	30,550		28,300	27,850	32,750
Lower quartile	17,850		16,350	15,900	18,150
Households below 60% GB median (= < £19,642)		29.0%	32.9%	34.0%	28.0%

For this measure, results at ward level are based on data for Conwy CBC strategic sub areas.

Benefits (DWP, May 2021)

There is a discontinuity in the benefits data, as Universal Credit is rolled out and starts to replace older awards systems. % is of all in that age group.

	Conwy		Conwy CB	Wales	GB
	Number	%			
Children (aged 0-15)					
Disability Living Allowance (DLA)	50	5.8%	5.5%	4.7%	4.5%
Working age (aged 16-66)					
Universal Credit	350	11.1%	14.6%	13.9%	14.1%
Job Seekers Allowance (JSA)	15	0.4%	0.5%	0.4%	0.4%
Employment & Support Allowance (ESA)	135	4.3%	5.9%	6.2%	4.3%
Disability Living Allowance (DLA)	5	0.2%	0.3%	0.2%	0.6%
Personal Independence Payments (PIP)	185	5.8%	7.8%	8.1%	5.5%
Carer's Allowance	70	2.3%	3.0%	3.1%	2.4%
Pensioners (aged 67+)					
State Pension (Nov 2020)	975				
Pension Credit	130	11.5%	13.1%	14.6%	13.2%
Attendance Allowance	140	12.2%	17.2%	16.5%	13.8%
Disability Living Allowance (DLA)	25	2.3%	5.5%	8.6%	5.2%
Personal Independence Payments (PIP)	25	2.2%	4.0%	5.6%	3.6%
Carer's Allowance	25	2.1%	3.7%	4.1%	2.9%

Poverty and deprivation

Children in low income families - relative income poverty (DWP, 2019/2020)

	Conwy		Conwy CB	Wales	GB
	Number	%			
Children in in-work families	115	13.4%	17.4%	16.9%	16.7%
Children in out-of-work families	30	3.3%	7.4%	8.2%	6.7%
Total	145	16.7%	24.8%	25.0%	23.4%

As % all children aged 0-15. 'In work' is working 16 hrs a week or more. Relative income poverty = below 60% of UK median.

Welsh index of multiple deprivation (Welsh Government, 2019)

	Conwy		Conwy CB	
	10%	25%	10%	25%
Total LSOAs in area	3		71	
No. LSOAs in most deprived:	10%	25%	10%	25%
In each deprivation domain				
Overall Index	0	0	4	11
Income	0	1	5	14
Employment	0	0	5	15
Health	0	0	3	10
Education	0	0	1	9
Access to services	0	0	9	18
Housing	0	0	6	17
Community safety	0	0	0	4
Physical environment	0	0	6	16

Deprivation data shows how many lower super output areas (LSOAs) in the area are in the 10% and 25% most deprived LSOAs in Wales.

These statistics may be used under the terms of the Open Government Licence.

Produced by the Corporate Research and Information Unit, Conwy County Borough Council, November 2021

research.unit@conwy.gov.uk

<http://www.conwy.gov.uk/statistics>