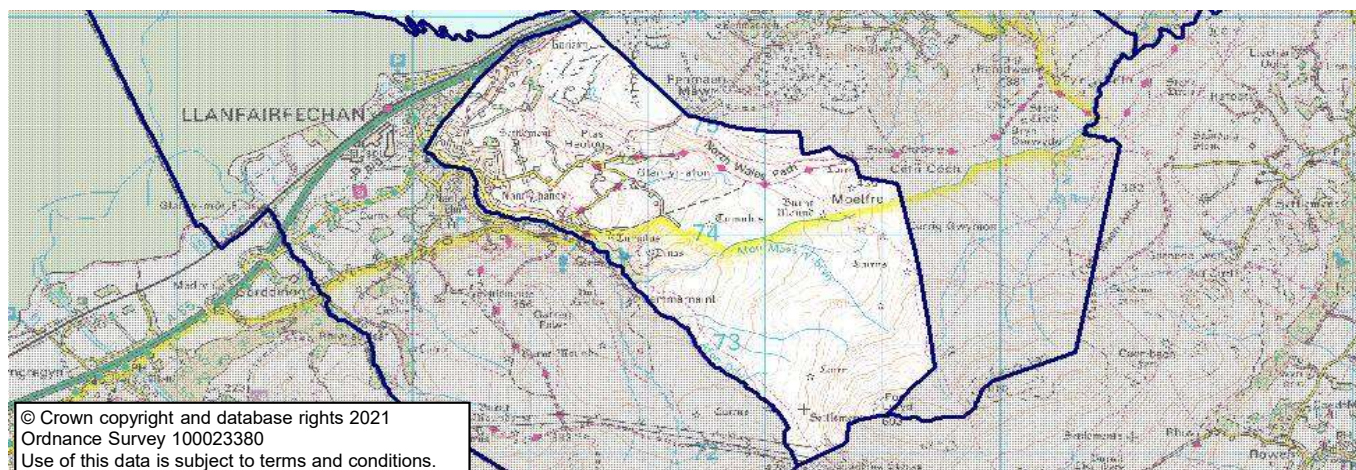


Conwy County Borough Council's ward profiles 2021

Pandy

Map



These statistics may be used under the terms of the Open Government Licence.

Produced by the Corporate Research and Information Unit, Conwy County Borough Council, November 2021

research.unit@conwy.gov.uk

<http://www.conwy.gov.uk/statistics>

Population characteristics

Population, age and gender 2020 (ONS MYE)

	Pandy		Conwy CB	Wales	GB
	Number	%	%	%	%
Mid-year population 2010	1,800	Change	Change	Change	Change
Mid-year population 2020	1,900	3.7%	3.1%	3.9%	6.9%
Males	950	49.3%	48.7%	49.3%	49.4%
Females	950	50.7%	51.3%	50.7%	50.6%
Aged 0-15	300	16.3%	16.0%	17.8%	18.9%
Aged 16-29	200	11.7%	13.5%	17.5%	17.2%
Aged 30-44	300	15.1%	14.8%	17.5%	19.4%
Aged 45-64	600	30.5%	27.9%	26.2%	25.8%
Aged 65+	500	26.4%	27.9%	21.1%	18.7%
Population density 2020 (persons/ha)		2.30	1.05	1.53	4.32

Population characteristics (Census 2011)

	Pandy		Conwy CB	Wales	E & W
	Number	%			
Born in Wales	1,160	63.7%	54.4%	72.7%	4.9%
Born outside the UK	46	2.5%	4.3%	5.5%	13.4%
Ethnicity - white British	1,762	96.7%	95.4%	93.2%	80.5%
Other white	31	1.7%	2.3%	2.4%	5.5%
Mixed ethnic group	21	1.2%	0.8%	1.0%	2.2%
Other ethnic groups	8	0.4%	1.5%	3.4%	11.8%
Religion - Christian	1,076	59.1%	64.7%	57.6%	59.3%
Other religion	9	0.5%	1.5%	2.7%	8.4%
No religion	569	31.2%	26.1%	32.1%	25.1%
(of persons aged 3+)					
Speak Welsh	853	48.4%	27.4%	19.0%	-
No skills in Welsh	660	37.5%	60.6%	73.3%	-

Health

Health and provision of care (Census 2011)

	Pandy		Conwy CB	Wales	E & W
	Number	%			
People with limiting long term illness	365	20.0%	24.2%	22.7%	17.9%
People providing unpaid care	201	11.0%	11.8%	12.1%	10.3%

Conwy County Borough Council's ward profiles 2021

Pandy

Housing and living arrangements

Households (Census 2011)

	Pandy		Conwy CB	Wales	E & W
	Number	%			
Total households	783		51,177	1,302,676	23,366,044
Household composition					
All one person household	221	28.2%	33.8%	30.8%	30.2%
- one person; aged 65+	104	13.3%	17.1%	13.7%	12.4%
All households with dependent children	208	26.6%	24.5%	28.2%	29.1%
- lone parents with dependents	47	6.0%	6.2%	7.5%	7.2%
All households of only pensioners	201	25.7%	29.2%	22.9%	20.9%
Population in private households	1,811	99.4%	97.7%	98.3%	98.2%
Average household size		2.31	2.20	2.31	2.36
Household facilities					
No central heating	29	3.7%	3.6%	2.3%	2.7%
Overcrowded	31	4.0%	4.3%	5.2%	8.5%
Average rooms per household		5.9	5.6	5.7	5.4
No car	92	11.7%	21.7%	22.9%	25.6%
Tenure					
Owner occupied	623	79.6%	70.1%	67.8%	64.3%
Rented from social landlord	70	8.9%	11.6%	16.5%	17.6%
Other rented	90	11.5%	18.3%	15.7%	18.0%

Dwellings by council tax band (VOA, March 2021)

	Pandy		Conwy CB	Wales
	Number	%		
Total dwellings	870	100%	57,720	1,458,100
Band A	20	2.3%	9.3%	14.5%
Band B	140	16.1%	14.4%	20.9%
Band C	290	33.3%	26.9%	21.8%
Band D	200	23.0%	20.5%	16.2%
Band E	120	13.8%	15.9%	13.5%
Band F	80	9.2%	8.7%	8.2%
Band G	20	2.3%	3.3%	3.7%
Band H	-	-	0.7%	0.9%
Band I	-	-	0.3%	0.4%

House prices (Land Registry, 2020; CACI PayCheck, 2020)

	Pandy		Conwy CB	Wales	E & W
	£				
Median (All house types)	£ 187,000		£ 175,000	£ 165,000	£ 244,950
Lower quartile (All house types)	£ 150,000		£ 131,000	£ 117,000	£ 156,000
Ratio income:houseprice (median)		5.8	5.9	5.7	7.3
Ratio income:houseprice (lower quartile)		7.9	7.6	7.0	8.3

For this measure, results at ward level are based on data for Conwy CBC strategic sub areas.

Housing related benefits (DWP, August 2021)

	Pandy		Conwy CB	Wales	GB
	Number	%			
Total claimants	90	100%	10,060	280,630	5,733,155
- housing benefit	30	34.8%	54.0%	51.9%	48.2%
- Universal Credit housing element	60	65.2%	46.0%	48.1%	51.8%
- private rented	45	52.2%	48.5%	34.7%	37.6%
- social rented	45	52.2%	50.9%	64.8%	61.5%
- households with children	55	58.7%	34.2%	36.7%	38.2%
Characteristics for housing benefit only					
- single pensioner (% HB)	5	15.6%	35.3%	32.9%	33.9%

These statistics may be used under the terms of the Open Government Licence.

Produced by the Corporate Research and Information Unit, Conwy County Borough Council, November 2021

research.unit@conwy.gov.uk

<http://www.conwy.gov.uk/statistics>

Conwy County Borough Council's ward profiles 2021

Pandy

Community safety

Crime incidences (North Wales Police)

	Pandy		Conwy CB	Wales	E & W
(year end 31st March)	Number	Rate*			
All crime incidences 2020/21	94	49.87	82.26	72.87	78.03
Violence against the person	56	29.71	40.57	30.04	30.09
Theft & handling	4	2.12	9.22	9.47	11.80
Criminal damage & arson	11	5.84	9.20	8.71	8.04

*annual crime rate per 1,000 population

Economy and employment

Industry of employment (Census 2011)

	Pandy		Conwy CB	Wales	E & W
	Number	%			
All in employment (aged 16-74)	810		50,093	1,363,615	26,526,336
Agriculture, forestry & fishing	8	1.0%	2.1%	1.7%	0.9%
Mining, quarrying, energy, water	12	1.5%	1.6%	1.9%	1.5%
Manufacturing	39	4.8%	4.9%	10.5%	8.9%
Construction	48	5.9%	8.2%	8.2%	7.7%
Wholesale & retail	123	15.2%	17.0%	15.6%	15.9%
Transport & storage	30	3.7%	3.7%	3.9%	5.0%
Accommodation & food services	33	4.1%	9.9%	6.2%	5.6%
Communication, finance, property	40	4.9%	5.2%	6.6%	9.7%
Professional, scientific, technical	43	5.3%	4.6%	4.3%	6.6%
Administrative & support services	19	2.3%	3.7%	4.0%	4.9%
Public administration & defence	55	6.8%	7.1%	7.9%	6.0%
Education	118	14.6%	10.2%	10.1%	9.9%
Health & social work	213	26.3%	16.7%	14.5%	12.5%
Other	29	3.6%	5.1%	4.5%	5.0%
Work mainly at or from home	48	5.9%	7.2%	5.4%	5.4%
No qualifications (all aged 16+)	315	20.7%	25.6%	25.9%	22.7%
Level 4+ qualification	524	34.4%	25.5%	24.5%	27.2%

Social class (Census, 2011)

	Pandy		Conwy CB	Wales	E & W
	Number	%			
All aged 16-74	1,335		81,906	2,245,166	41,126,540
Managerial & professional	476	35.7%	29.0%	27.4%	31.1%
Skilled	348	26.1%	31.8%	29.4%	29.1%
Part / unskilled	343	25.7%	27.9%	28.8%	25.2%
Students & other	168	12.6%	11.3%	14.5%	14.6%

Unemployment (claimant count) (NOMIS, 2021)

	Pandy		Conwy CB	Wales	GB
	Number	%			
October 2021	40	3.9%	4.6%	4.3%	4.8%
July 2021 (previous quarter)	45	4.0%	5.1%	4.8%	5.4%
October 2020 (previous year)	55	5.0%	6.3%	5.7%	6.2%
October 2016 (5 years ago)	25	2.2%	2.1%	2.2%	1.8%
Claimants aged 16-24 (Oct-21)*	5	-	17.4%	19.3%	17.0%
Claimants aged 50+ (Oct 21)*	10	-	29.8%	23.1%	24.3%

* Rounded to nearest 5. % is of all claimants.

These statistics may be used under the terms of the Open Government Licence.

Produced by the Corporate Research and Information Unit, Conwy County Borough Council, November 2021

research.unit@conwy.gov.uk

<http://www.conwy.gov.uk/statistics>

Conwy County Borough Council's ward profiles 2021

Pandy

Income and benefits

Household income (CACI PayCheck, 2021)

	Pandy		Conwy CB	Wales	GB
	£	%			
Median income (annual)	30,550		28,300	27,850	32,750
Lower quartile	17,850		16,350	15,900	18,150
Households below 60% GB median (= < £19,642)		29.0%	32.9%	34.0%	28.0%

For this measure, results at ward level are based on data for Conwy CBC strategic sub areas.

Benefits (DWP, May 2021)

There is a discontinuity in the benefits data, as Universal Credit is rolled out and starts to replace older awards systems. % is of all in that age group.

	Pandy		Conwy CB	Wales	GB
	Number	%			
Children (aged 0-15)					
Disability Living Allowance (DLA)	20	6.2%	5.5%	4.7%	4.5%
Working age (aged 16-66)					
Universal Credit	130	11.7%	14.6%	13.9%	14.1%
Job Seekers Allowance (JSA)	0	-	0.5%	0.4%	0.4%
Employment & Support Allowance (ESA)	40	3.6%	5.9%	6.2%	4.3%
Disability Living Allowance (DLA)	5	0.4%	0.3%	0.2%	0.6%
Personal Independence Payments (PIP)	65	5.6%	7.8%	8.1%	5.5%
Carer's Allowance	20	1.9%	3.0%	3.1%	2.4%
Pensioners (aged 67+)					
State Pension (Nov 2020)	430				
Pension Credit	25	6.0%	13.1%	14.6%	13.2%
Attendance Allowance	50	11.3%	17.2%	16.5%	13.8%
Disability Living Allowance (DLA)	20	4.4%	5.5%	8.6%	5.2%
Personal Independence Payments (PIP)	10	2.4%	4.0%	5.6%	3.6%
Carer's Allowance	15	3.6%	3.7%	4.1%	2.9%

Poverty and deprivation

Children in low income families - relative income poverty (DWP, 2019/2020)

	Pandy		Conwy CB	Wales	GB
Children in in-work families	25	8.4%	17.4%	16.9%	16.7%
Children in out-of-work families	30	9.1%	7.4%	8.2%	6.7%
Total	55	17.5%	24.8%	25.0%	23.4%

As % all children aged 0-15. 'In work' is working 16 hrs a week or more. Relative income poverty = below 60% of UK median.

Welsh index of multiple deprivation (Welsh Government, 2019)

	Pandy		Conwy CB	
Total LSOAs in area	1		71	
No. LSOAs in most deprived:	10%	25%	10%	25%
In each deprivation domain				
Overall Index	0	0	4	11
Income	0	0	5	14
Employment	0	0	5	15
Health	0	0	3	10
Education	0	0	1	9
Access to services	0	0	9	18
Housing	0	0	6	17
Community safety	0	0	0	4
Physical environment	0	0	6	16

Deprivation data shows how many lower super output areas (LSOAs) in the area are in the 10% and 25% most deprived LSOAs in Wales.

These statistics may be used under the terms of the Open Government Licence.

Produced by the Corporate Research and Information Unit, Conwy County Borough Council, November 2021

research.unit@conwy.gov.uk

<http://www.conwy.gov.uk/statistics>