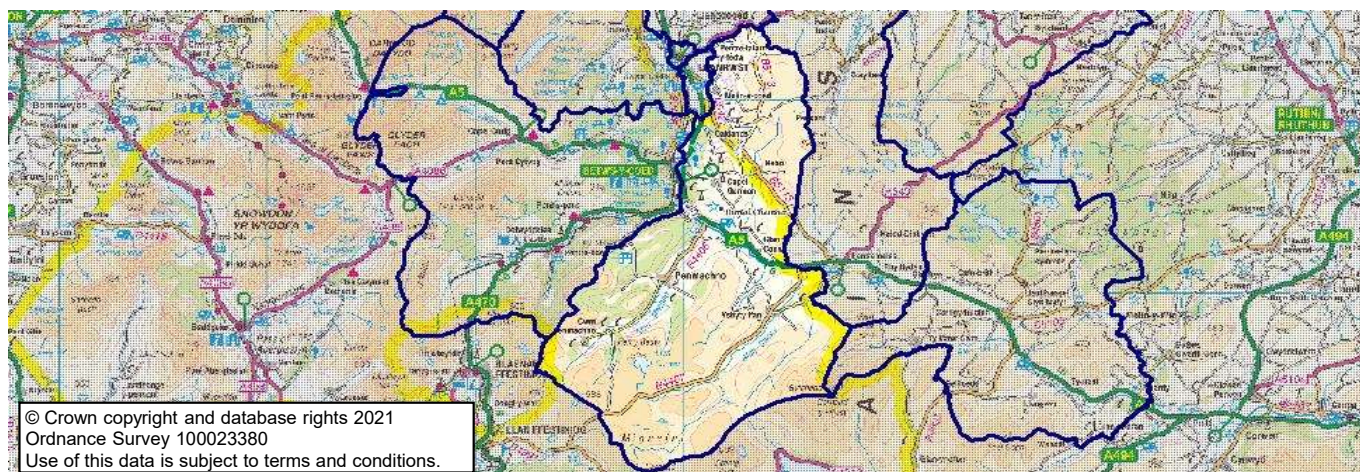


Conwy County Borough Council's ward profiles 2021

Uwch Conwy

Map



These statistics may be used under the terms of the Open Government Licence.

Produced by the Corporate Research and Information Unit, Conwy County Borough Council, November 2021

research.unit@conwy.gov.uk

<http://www.conwy.gov.uk/statistics>

Population characteristics

Population, age and gender 2020 (ONS MYE)

	Uwch Conwy		Conwy CB	Wales	GB
	Number	%	%	%	%
Mid-year population 2010	1,450	Change	Change	Change	Change
Mid-year population 2020	1,450	0.4%	3.1%	3.9%	6.9%
Males	750	50.3%	48.7%	49.3%	49.4%
Females	700	49.7%	51.3%	50.7%	50.6%
Aged 0-15	250	16.2%	16.0%	17.8%	18.9%
Aged 16-29	150	11.8%	13.5%	17.5%	17.2%
Aged 30-44	250	16.1%	14.8%	17.5%	19.4%
Aged 45-64	450	32.3%	27.9%	26.2%	25.8%
Aged 65+	350	23.7%	27.9%	21.1%	18.7%
Population density 2020 (persons/ha)		0.08	1.05	1.53	4.32

Population characteristics (Census 2011)

	Uwch Conwy		Conwy CB	Wales	E & W
	Number	%			
Born in Wales	949	64.8%	54.4%	72.7%	4.9%
Born outside the UK	46	3.1%	4.3%	5.5%	13.4%
Ethnicity - white British	1,421	97.0%	95.4%	93.2%	80.5%
Other white	25	1.7%	2.3%	2.4%	5.5%
Mixed ethnic group	11	0.8%	0.8%	1.0%	2.2%
Other ethnic groups	8	0.5%	1.5%	3.4%	11.8%
Religion - Christian	938	64.0%	64.7%	57.6%	59.3%
Other religion	10	0.7%	1.5%	2.7%	8.4%
No religion	387	26.4%	26.1%	32.1%	25.1%
(of persons aged 3+)					
Speak Welsh	863	60.7%	27.4%	19.0%	-
No skills in Welsh	433	30.5%	60.6%	73.3%	-

Health

Health and provision of care (Census 2011)

	Uwch Conwy		Conwy CB	Wales	E & W
	Number	%			
People with limiting long term illness	253	17.3%	24.2%	22.7%	17.9%
People providing unpaid care	136	9.3%	11.8%	12.1%	10.3%

Conwy County Borough Council's ward profiles 2021

Uwch Conwy

Housing and living arrangements

Households (Census 2011)

	Uwch Conwy		Conwy CB	Wales	E & W
	Number	%			
Total households	644		51,177	1,302,676	23,366,044
Household composition					
All one person household	210	32.6%	33.8%	30.8%	30.2%
- one person; aged 65+	77	12.0%	17.1%	13.7%	12.4%
All households with dependent children	134	20.8%	24.5%	28.2%	29.1%
- lone parents with dependents	16	2.5%	6.2%	7.5%	7.2%
All households of only pensioners	132	20.5%	29.2%	22.9%	20.9%
Population in private households	1,460	99.7%	97.7%	98.3%	98.2%
Average household size		2.27	2.20	2.31	2.36
Household facilities					
No central heating	66	10.2%	3.6%	2.3%	2.7%
Overcrowded	25	3.9%	4.3%	5.2%	8.5%
Average rooms per household		6.0	5.6	5.7	5.4
No car	54	8.4%	21.7%	22.9%	25.6%
Tenure					
Owner occupied	439	68.2%	70.1%	67.8%	64.3%
Rented from social landlord	85	13.2%	11.6%	16.5%	17.6%
Other rented	120	18.6%	18.3%	15.7%	18.0%

Dwellings by council tax band (VOA, March 2021)

	Uwch Conwy		Conwy CB	Wales
	Number	%		
Total dwellings	830	100%	57,720	1,458,100
Band A	60	7.2%	9.3%	14.5%
Band B	220	26.5%	14.4%	20.9%
Band C	180	21.7%	26.9%	21.8%
Band D	140	16.9%	20.5%	16.2%
Band E	140	16.9%	15.9%	13.5%
Band F	70	8.4%	8.7%	8.2%
Band G	20	2.4%	3.3%	3.7%
Band H	-	-	0.7%	0.9%
Band I	-	-	0.3%	0.4%

House prices (Land Registry, 2020; CACI PayCheck, 2020)

	Uwch Conwy		Conwy CB		Wales		E & W	
	£		£		£		£	
Median (All house types)	£	170,000	£	175,000	£	165,000	£	244,950
Lower quartile (All house types)	£	133,000	£	131,000	£	117,000	£	156,000
Ratio income:houseprice (median)		5.6		5.9		5.7		7.3
Ratio income:houseprice (lower quartile)		7.5		7.6		7.0		8.3

For this measure, results at ward level are based on data for Conwy CBC strategic sub areas.

Housing related benefits (DWP, August 2021)

	Uwch Conwy		Conwy CB	Wales	GB
	Number	%			
Total claimants	45	100%	10,060	280,630	5,733,155
- housing benefit	30	66.0%	54.0%	51.9%	48.2%
- Universal Credit housing element	15	34.0%	46.0%	48.1%	51.8%
- private rented	25	48.9%	48.5%	34.7%	37.6%
- social rented	25	51.1%	50.9%	64.8%	61.5%
- households with children	10	19.1%	34.2%	36.7%	38.2%
Characteristics for housing benefit only					
- single pensioner (% HB)	10	29.0%	35.3%	32.9%	33.9%

These statistics may be used under the terms of the Open Government Licence.

Produced by the Corporate Research and Information Unit, Conwy County Borough Council, November 2021

research.unit@conwy.gov.uk

<http://www.conwy.gov.uk/statistics>

Conwy County Borough Council's ward profiles 2021

Uwch Conwy

Community safety

Crime incidences (North Wales Police)

	Uwch Conwy		Conwy CB	Wales	E & W
(year end 31st March)	Number	Rate*			
All crime incidences 2020/21	39	26.82	82.26	72.87	78.03
Violence against the person	11	7.57	40.57	30.04	30.09
Theft & handling	8	5.50	9.22	9.47	11.80
Criminal damage & arson	12	8.25	9.20	8.71	8.04

*annual crime rate per 1,000 population

Economy and employment

Industry of employment (Census 2011)

	Uwch Conwy		Conwy CB	Wales	E & W
	Number	%			
All in employment (aged 16-74)	847		50,093	1,363,615	26,526,336
Agriculture, forestry & fishing	110	13.0%	2.1%	1.7%	0.9%
Mining, quarrying, energy, water	17	2.0%	1.6%	1.9%	1.5%
Manufacturing	38	4.5%	4.9%	10.5%	8.9%
Construction	80	9.4%	8.2%	8.2%	7.7%
Wholesale & retail	91	10.7%	17.0%	15.6%	15.9%
Transport & storage	17	2.0%	3.7%	3.9%	5.0%
Accommodation & food services	67	7.9%	9.9%	6.2%	5.6%
Communication, finance, property	40	4.7%	5.2%	6.6%	9.7%
Professional, scientific, technical	43	5.1%	4.6%	4.3%	6.6%
Administrative & support services	35	4.1%	3.7%	4.0%	4.9%
Public administration & defence	56	6.6%	7.1%	7.9%	6.0%
Education	119	14.0%	10.2%	10.1%	9.9%
Health & social work	88	10.4%	16.7%	14.5%	12.5%
Other	46	5.4%	5.1%	4.5%	5.0%
Work mainly at or from home	155	18.3%	7.2%	5.4%	5.4%
No qualifications (all aged 16+)	223	17.8%	25.6%	25.9%	22.7%
Level 4+ qualification	391	31.2%	25.5%	24.5%	27.2%

Social class (Census, 2011)

	Uwch Conwy		Conwy CB	Wales	E & W
	Number	%			
All aged 16-74	1,153		81,906	2,245,166	41,126,540
Managerial & professional	351	30.4%	29.0%	27.4%	31.1%
Skilled	470	40.8%	31.8%	29.4%	29.1%
Part / unskilled	248	21.5%	27.9%	28.8%	25.2%
Students & other	84	7.3%	11.3%	14.5%	14.6%

Unemployment (claimant count) (NOMIS, 2021)

	Uwch Conwy		Conwy CB	Wales	GB
	Number	%			
October 2021	10	1.4%	4.6%	4.3%	4.8%
July 2021 (previous quarter)	20	2.1%	5.1%	4.8%	5.4%
October 2020 (previous year)	20	2.1%	6.3%	5.7%	6.2%
October 2016 (5 years ago)	10	0.9%	2.1%	2.2%	1.8%
Claimants aged 16-24 (Oct-21)*	<3	-	17.4%	19.3%	17.0%
Claimants aged 50+ (Oct 21)*	5	-	29.8%	23.1%	24.3%

* Rounded to nearest 5. % is of all claimants.

These statistics may be used under the terms of the Open Government Licence.

Produced by the Corporate Research and Information Unit, Conwy County Borough Council, November 2021

research.unit@conwy.gov.uk

<http://www.conwy.gov.uk/statistics>

Conwy County Borough Council's ward profiles 2021

Uwch Conwy

Income and benefits

Household income (CACI PayCheck, 2021)

	Uwch Conwy		Conwy CB	Wales	GB
	£	%			
Median income (annual)	28,850		28,300	27,850	32,750
Lower quartile	16,650		16,350	15,900	18,150
Households below 60% GB median (= < £19,642)		32.0%	32.9%	34.0%	28.0%

For this measure, results at ward level are based on data for Conwy CBC strategic sub areas.

Benefits (DWP, May 2021)

There is a discontinuity in the benefits data, as Universal Credit is rolled out and starts to replace older awards systems. % is of all in that age group.

	Uwch Conwy		Conwy CB	Wales	GB
	Number	%			
Children (aged 0-15)					
Disability Living Allowance (DLA)	0	-	5.5%	4.7%	4.5%
Working age (aged 16-66)					
Universal Credit	75	8.1%	14.6%	13.9%	14.1%
Job Seekers Allowance (JSA)	0	-	0.5%	0.4%	0.4%
Employment & Support Allowance (ESA)	40	4.3%	5.9%	6.2%	4.3%
Disability Living Allowance (DLA)	0	-	0.3%	0.2%	0.6%
Personal Independence Payments (PIP)	45	5.0%	7.8%	8.1%	5.5%
Carer's Allowance	20	2.4%	3.0%	3.1%	2.4%
Pensioners (aged 67+)					
State Pension (Nov 2020)	335				
Pension Credit	40	12.9%	13.1%	14.6%	13.2%
Attendance Allowance	45	15.1%	17.2%	16.5%	13.8%
Disability Living Allowance (DLA)	5	1.6%	5.5%	8.6%	5.2%
Personal Independence Payments (PIP)	10	2.9%	4.0%	5.6%	3.6%
Carer's Allowance	10	3.2%	3.7%	4.1%	2.9%

Poverty and deprivation

Children in low income families - relative income poverty (DWP, 2019/2020)

	Uwch Conwy		Conwy CB	Wales	GB
Children in in-work families	50	20.4%	17.4%	16.9%	16.7%
Children in out-of-work families	10	3.4%	7.4%	8.2%	6.7%
Total	60	23.8%	24.8%	25.0%	23.4%

As % all children aged 0-15. 'In work' is working 16 hrs a week or more. Relative income poverty = below 60% of UK median.

Welsh index of multiple deprivation (Welsh Government, 2019)

	Uwch Conwy		Conwy CB	
	10%	25%	10%	25%
Total LSOAs in area	1		71	
No. LSOAs in most deprived:	10%	25%	10%	25%
In each deprivation domain				
Overall Index	0	0	4	11
Income	0	0	5	14
Employment	0	0	5	15
Health	0	0	3	10
Education	0	0	1	9
Access to services	1	1	9	18
Housing	0	0	6	17
Community safety	0	0	0	4
Physical environment	1	1	6	16

Deprivation data shows how many lower super output areas (LSOAs) in the area are in the 10% and 25% most deprived LSOAs in Wales.

These statistics may be used under the terms of the Open Government Licence.

Produced by the Corporate Research and Information Unit, Conwy County Borough Council, November 2021

research.unit@conwy.gov.uk

<http://www.conwy.gov.uk/statistics>