



# Welsh index of multiple deprivation 2011 for Conwy County Borough

Corporate Research and Information Unit

September 2011

## Contact us

If you have any suggestions about how we could improve this bulletin, or if you require further information, please contact us.

The Corporate Research and Information Unit  
Bodlondeb,  
Conwy, LL32 8DU.  
Email: [research.unit@conwy.gov.uk](mailto:research.unit@conwy.gov.uk)

Phone: 01492 575291

## Next update – ad hoc

## 1 The Welsh index of multiple deprivation 2011

- 1.1 The Welsh Index of Multiple Deprivation 2011 (WIMD 2011) is the official measure of deprivation for small areas in Wales. It is produced by the Welsh Government so that funding, policy and programmes can be effectively focussed on the most disadvantaged communities.
- 1.2 Deprivation is a wider concept than poverty. Poverty means not having enough money (or other essentials) to get by. Deprivation refers to problems caused by a general lack of resources and opportunities (not just money), for example good health, protection from crime, a clean and safe environment. Multiple deprivation refers to the different types of deprivation that may occur.

## 2 What are lower super output areas (LSOAs)?

- 2.1 Wales has been broken down into 1,896 small areas called Lower Super Output Areas or LSOAs. Although very different in geographical size, they have an average population of 1,500 people. This is to make fairer comparisons between areas located in different parts of Wales.

## 3 What is an index?

- 3.1 An index is a group of separate measurements which are combined into a single number. They are designed to show changes in a complicated variable like industrial output, prices or in this case deprivation. An index then allows comparisons between different values – in the case of WIMD, the comparison is between LSOAs.

## 4 How is the WIMD 2011 produced?

- 4.1 The WIMD 2011 ranks each of the 1,896 LSOAs in Wales against each other, with a rank of 1 assigned to the most deprived area. For most purposes the top 10% (i.e. those ranked between 1 and 190) is taken to represent those areas which are most deprived in Wales.
- 4.2 The ranks are broken down into eight different types of deprivation, each of which contributes a different weighting to the overall index.

Deprivation Type	Weighting in WIMD
Income	23.5%
Employment	23.5%
Health	14%
Education	14%
Housing	5%
Physical environment	5%
Access to services	10%
Community safety	5%

- 4.3 A score is calculated for each type of deprivation based on a number of underlying indicators. A list of the indicators can be found in Appendix A.

## 5 The child index

- 5.1 Alongside the main index the Welsh Government also produce a child version of the WIMD. This Child index of Multiple Deprivation uses the same methodology as the main index, but is based on indicators that relate specifically to children and young people. The employment domain is not included.

## 6 Using the WIMD 2011

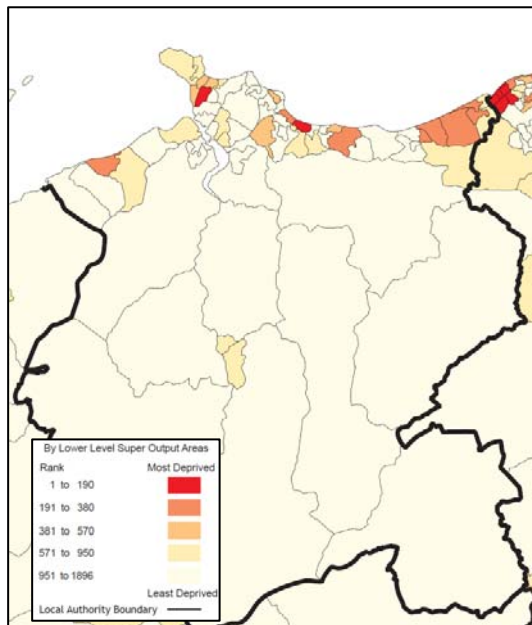
- 6.1 The ranks are a relative system of measurement; we can know which areas or more (or less) deprived than others, but not by how much. For example, if area A has a rank of 100 and area B a rank of 300, it does not follow that A is three times more deprived than B.
- 6.2 There can be individuals in deprived areas that would not be considered deprived; and there can also be individuals that would be considered deprived in the least deprived areas. Around 1 in 5 of the people in income-benefits households live in the most deprived 10% of areas in Wales.
- 6.3 It is important to remember that a lack of deprivation is not the same as affluence. The least-deprived area is not necessarily the most affluent area in Wales.
- 6.4 It is not possible to compare deprivation scores with the 2008 and 2005 indexes. The parts that make up the index are different and the indexes were worked out in different ways. An area's score is affected by the scores of every other area; so it is impossible to tell whether a change in score is a real change in the deprivation level of an area, or whether it is due to the scores of other areas going up or down. The WIMD indicator data is updated annually where possible and so can be used to monitor change over time.
- 6.5 It is not possible to aggregate the ranks to larger geographies or non-geographic groups by taking an average of the ranks. Larger geographies can be compared by calculating the percentage of the small areas in the larger geography which are in the most deprived 10 (ranks 1-190) or 20 (ranks 1-380) percent. WG WIMD 2011 summary report has details of this at local authority level. WG have also aggregated the indicator data into useful groups, including local authorities and Communities First areas.
- 6.6 England, Scotland and Northern Ireland all produce their own indexes of multiple deprivation. However, these are not directly comparable: they are produced for different geographies; there are differences between the indicators; differences in policy drivers mean that the indexes have developed differently with devolution; and the indexes are produced on different timescales and so they do not tend to refer to the same year of data.

## 7 Significant changes between the WIMD 2008 and 2011

- 7.1 Abergele-Pensarn and Rhiw 3 are no longer ranked amongst the top 10% most deprived areas in Wales, but Abergele-Pensarn is still in the top 10% for the Child version of the Index.
- 7.2 Llysfaen 1 changed in rank from 239 to 71 for income related deprivation on the main index and is the most deprived LSOA in Conwy on the Child index.
- 7.3 Glyn 2 is now ranked 7th most deprived in Wales in relation to employment and community safety.
- 7.4 There are now no LSOAs in Conwy featuring amongst the top 10% most deprived in Wales in relation to education. In 2008 both Tudno 2 and Abergele-Pensarn did feature in the top 10%.
- 7.5 Towyn is now amongst the top 10% most deprived according to the health part of the WIMD.
- 7.6 All four LSOAs in Kinmel Bay along with Towyn feature amongst the top 10% most deprived for physical environment following updates to the number of properties at high risk of flooding

## 8 Conwy LSOAs amongst the top 10% most deprived in Wales

### Overall



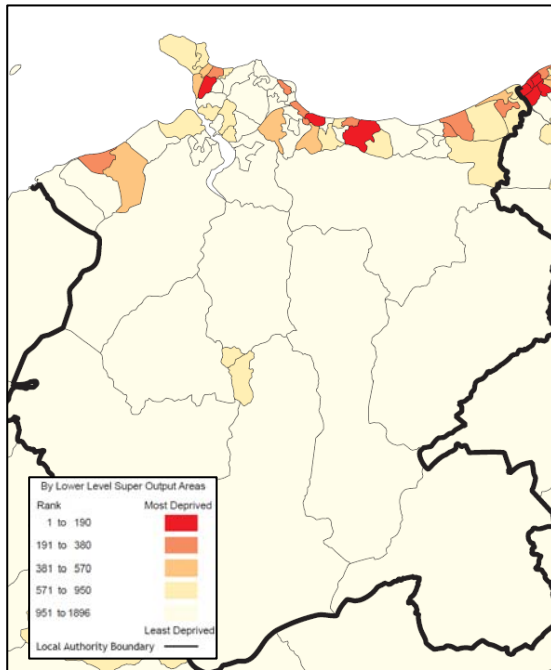
### Main index

LSOA	Rank 2011	Rank 2008
Glyn (Conwy) 2	50	46
Tudno 2	116	107

### Child index

LSOA	Rank 2011	Rank 2008
Llysfaen 1	70	57
Abergele Pensarn	116	106
Tudno 2	138	155

## Income



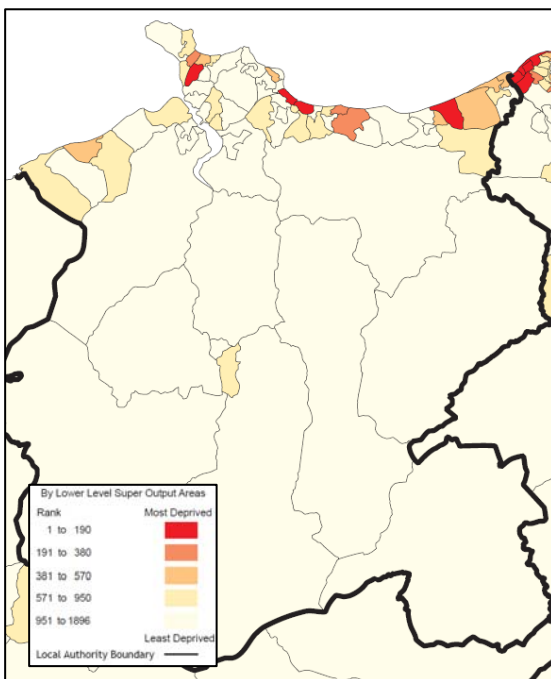
### Main index

LSOA	Rank 2011	Rank 2008
Glyn (Conwy) 2	52	69
Llysfaen 1	71	239
Tudno 2	72	198

### Child index

LSOA	Rank 2011	Rank 2008
Llysfaen 1	56	52
Tudno 2	119	205

## Employment



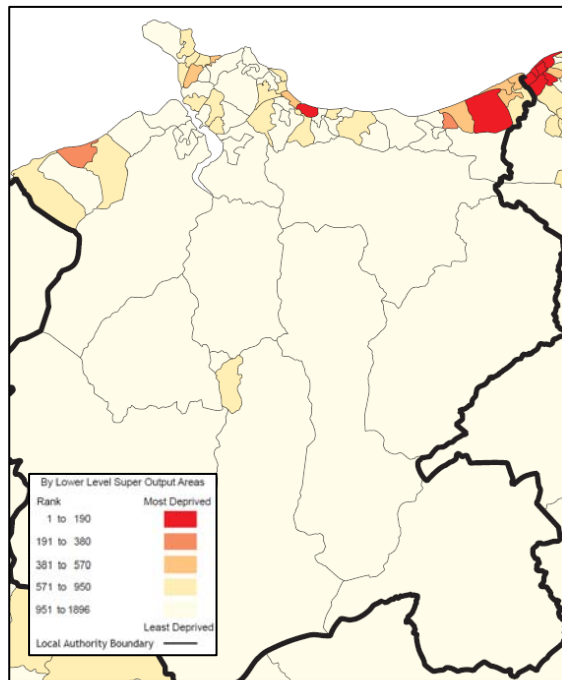
### Main index

LSOA	Rank 2011	Rank 2008
Glyn (Conwy) 2	7	25
Rhiw 3	34	33
Abergele Pensarn	97	74
Tudno 2	153	121

### Child index

There is no Child index theme for employment

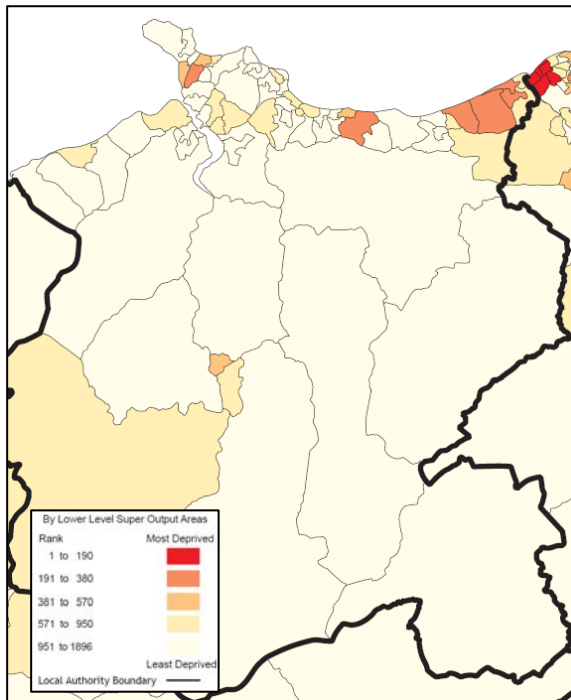
## Health



LSOA	Rank 2011	Rank 2008
Glyn (Conwy) 2	122	50
Towyn	164	292

LSOA	Rank 2011	Rank 2008
Abergele Pensarn	24	28
Glyn (Conwy) 3	34	39
Llysfaen 1	66	90
Deganwy 2	89	316
Rhiw 3	127	118
Uwchaled	135	230
Tudno 1	150	233
Llandrillo yn Rhos 2	152	86

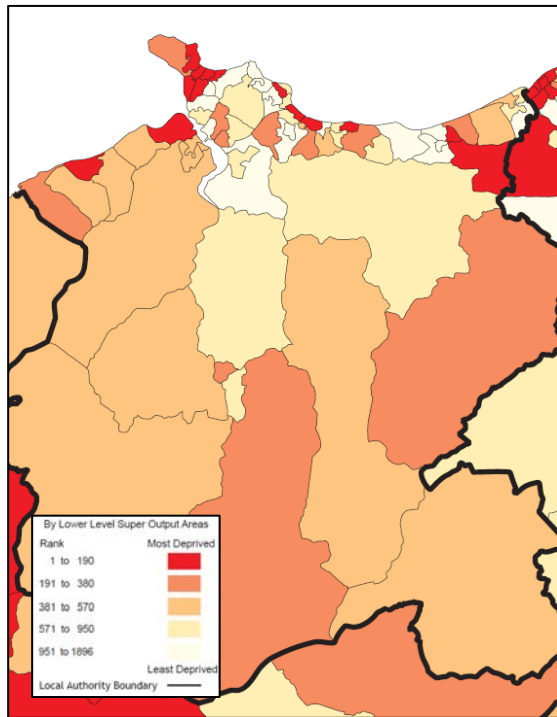
## Education



None amongst the top 10%



## Housing



### Main index

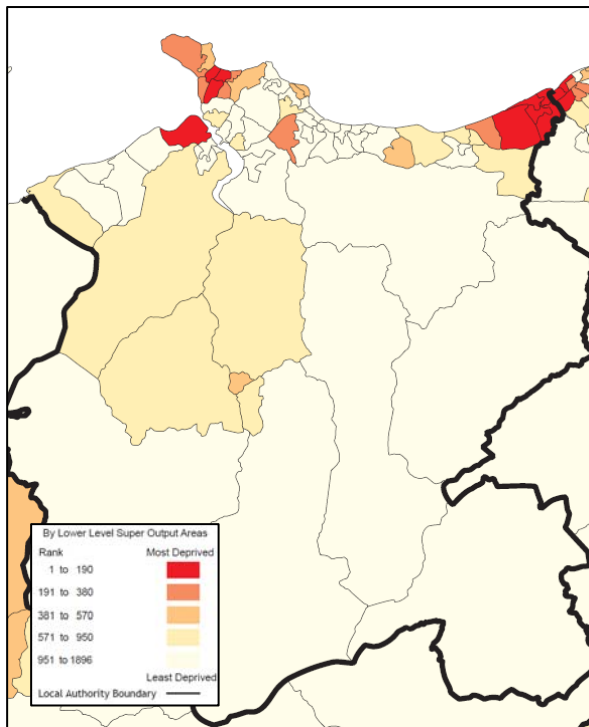
LSOA	Rank 2011	Rank 2008
Gogarth 1	15	15
Glyn (Conwy) 2	18	18
Pentre Mawr 1	20	20
Tudno 2	32	32
Craig-y-Don 1	45	45
Tudno 1	49	49
Rhiw 3	64	64
Colwyn 2	89	89
Mostyn (Conwy) 1	90	90
Mostyn (Conwy) 2	107	107
Llandrillo yn Rhos 4	133	133
Pant-yr-afon / Penmaenan 2	152	152
Conwy 1	160	160
Gele 1	171	171

### Child index

LSOA	Rank 2011	Rank 2008
Pentre Mawr 1	14	14
Colwyn 2	38	38
Tudno 2	50	50
Pant-yr-afon/Penmaenan 2	51	51
Gogarth 1	59	59
Mostyn (Conwy) 1	64	64
Tudno 1	66	66
Conwy 1	85	85
Mochdre	97	97
Glyn (Conwy) 2	103	103
Llandrillo yn Rhos 4	144	144
Gower (Conwy)	147	147
Gele 1	174	174



### Physical environment



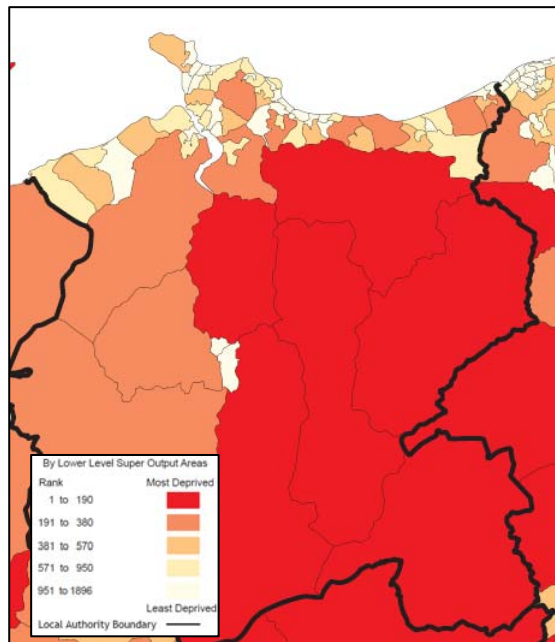
#### Main index

LSOA	Rank 2011	Rank 2008
Kinmel Bay 4	111	118
Kinmel Bay 2	132	164
Kinmel Bay 1	140	216
Kinmel Bay 3	148	151
Tudno 1	150	225
Conwy 1	162	227
Mostyn (Conwy) 2	170	281
Towyn	173	286
Tudno 2	184	353

#### Child index

LSOA	Rank 2011	Rank 2008
Kinmel Bay 4	111	118
Kinmel Bay 2	132	164
Kinmel Bay 1	140	216
Kinmel Bay 3	148	151
Tudno 1	150	225
Conwy 1	162	227
Mostyn (Conwy) 2	170	281
Towyn	173	286
Tudno 2	184	353

### Access to services



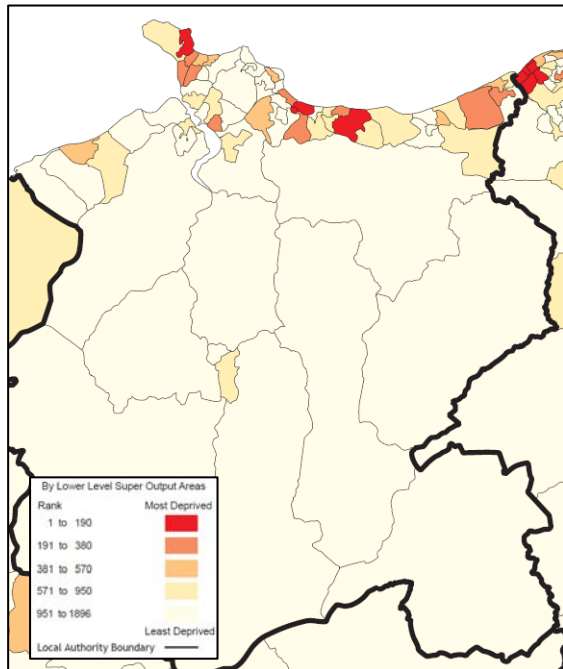
#### Main index

LSOA	Rank 2011	Rank 2008
Llansannan	42	42
Uwchaled	50	50
Uwch Conwy	68	68
Llangernyw	99	99
Betws yn Rhos	108	108
Eglwysbach	133	133

#### Child index

LSOA	Rank 2011	Rank 2008
Llansannan	49	49
Uwchaled	51	51
Uwch Conwy	86	86
Llangernyw	96	96
Betws yn Rhos	129	129
Eglwysbach	153	153
Caerhun	188	188

**Community safety**



**Main index**

LSOA	Rank 2011	Rank 2008
Glyn (Conwy) 2	7	26
Llysfaen 1	149	54
Gogarth 1	168	145
Glyn (Conwy) 1	187	131

**Child index**

LSOA	Rank 2011	Rank 2008
Glyn (Conwy) 2	7	26
Llysfaen 1	149	54
Gogarth 1	168	145
Glyn (Conwy) 1	187	131

## Appendix A: indicators in the WIMD 2011

### Main index

---

#### Income

- Percentage in receipt of income-related benefits
- Percentage in households receiving Tax Credits with income less than 60% of the Wales median
- NASS-supported asylum seekers

#### Employment

- Percentage in receipt of employment-related benefits

#### Health

- Cancer incidence
- All-cause death rate
- Percentage of live single births < 2.5kg
- Limiting long-term illness

#### Education

- Key Stage 2 average point scores
- Key Stage 3 average point scores
- Key Stage 4 average point scores
- Percentage of people not entering higher education age 18-19
- Percentage of adults aged 25-59/64 with no qualifications
- Percentage primary school half day absence
- Percentage secondary school half day absence

#### Housing

- Percentage of population in households with no central heating
- Percentage of population living in overcrowded households

#### Physical environment

- Air emissions
- Air quality
- Proportion of households at risk of flooding
- Proximity to waste disposal and industrial sites

#### Access to services

- Mean bus + walking journey time to:
  - NHS dentist
  - Food shop
  - GP surgery
  - Leisure centre
  - Public library
  - Post Office
  - Primary school
  - Secondary school
  - Transport node

#### Community safety

- Percentage of adult offenders
- Police recorded burglary
- Police recorded criminal damage

- Fire incidence
- Police recorded theft
- Police recorded violent crime
- Percentage of youth offenders

## Child index

---

### Income

- Number of children in income-related benefit households
- Number of children in households receiving Tax Credits with income less than 60% of the Wales median

### Employment

- None

### Health

- Percentage of live single births < 2.5kg
- Limiting long-term illness (Children)

### Education

- Key Stage 2 average point scores
- Key Stage 3 average point scores
- Key Stage 4 average point scores
- Percentage primary school half day absence
- Percentage secondary school half day absence

### Housing

- Percentage of children in households with no central heating
- Percentage of children living in overcrowded households

### Physical environment

- Air emissions
- Air quality
- Proportion of households at risk of flooding
- Proximity to waste disposal and industrial sites

### Access to services

- Mean bus + walking journey time to:
  - Leisure centre
  - Public library
  - Primary school
  - Secondary school

### Community safety

- Percentage of adult offenders
- Police recorded burglary
- Police recorded criminal damage
- Fire incidence
- Police recorded theft
- Police recorded violent crime
- Percentage of youth offenders

## Appendix B: full WIMD 2011 results for Conwy County Borough

LSOA Name	Overall index	Income	Employment	Health	Education	Housing	Physical environment	Access to services	Community safety
Glyn (Conwy) 2	50	52	7	122	728	18	1535	1779	7
Tudno 2	116	72	153	499	205	32	184	996	208
Llysaen 1	194	71	295	695	328	290	1336	376	149
Abergele Pensarn	195	314	97	494	270	203	209	660	612
Rhiw 3	221	255	34	490	932	64	1847	1726	370
Towyn	293	615	400	164	360	512	173	354	335
Kinmel Bay 1	349	407	347	506	273	455	140	954	538
Pant-yr-afon/Penmaenan 2	355	279	400	203	793	152	1859	686	460
Pentre Mawr 1	370	263	456	366	618	20	808	1648	488
Kinmel Bay 3	371	331	585	543	361	676	148	431	353
Colwyn 2	409	324	295	1021	493	89	1856	799	373
Tudno 1	423	366	456	873	463	49	150	1704	389
Mostyn (Conwy) 2	451	442	295	718	963	107	170	1758	344
Llandrillo yn Rhos 4	470	379	400	995	687	133	422	1011	413
Mochdre	501	474	585	650	597	202	192	1024	504
Mostyn (Conwy) 1	509	499	655	617	508	90	250	1676	323
Glyn (Conwy) 1	574	380	522	577	806	550	1873	1519	187
Kinmel Bay 4	579	736	456	483	733	914	111	1143	642
Craig-y-Don 1	581	763	522	545	908	45	211	1560	518
Gogarth 1	598	700	585	855	1115	15	467	1345	168
Glyn (Conwy) 3	647	439	655	878	1055	238	1882	723	303
Pensarn 1	648	573	708	790	587	229	604	1725	238
Gele 1	717	619	782	1212	822	171	842	607	628

<span style="background-color: #0056b3; color: white; padding: 2px;"> </span>	Amongst 10% most deprived in Wales
<span style="background-color: #66aaff; color: white; padding: 2px;"> </span>	Amongst 20% most deprived in Wales
<span style="background-color: #aaffff; color: white; padding: 2px;"> </span>	Amongst 30% most deprived in Wales

LSOA Name	Overall index	Income	Employment	Health	Education	Housing	Physical environment	Access to services	Community safety
Pant-yr-afon/Penmaenan 1	783	528	585	883	1093	521	1886	1276	605
Crwst	789	660	708	765	708	745	630	1485	764
Marl 2	801	754	782	814	662	369	1034	1050	807
Kinmel Bay 2	821	942	1111	713	722	1508	132	343	1394
Conwy 1	827	794	861	1373	946	160	162	816	1115
Gower (Conwy)	837	629	1022	1144	497	196	519	1593	1205
Eirias 1	855	656	708	1094	1402	408	1885	427	852
Gogarth 2	919	870	1022	1241	1145	345	377	443	945
Deganwy 2	989	940	1022	667	1057	790	865	826	742
Bryn	1011	1212	861	758	1061	334	827	793	1192
Uwch Conwy	1068	1402	1327	1563	1029	209	1695	68	1820
Llandrillo yn Rhos 3	1073	981	941	682	1678	827	487	913	1079
Llansannan	1081	1352	1327	1551	1333	340	1529	42	1719
Llysfaen 2	1082	821	1327	1541	1111	663	476	462	885
Trefriw	1084	1118	1111	1455	1129	526	609	251	1746
Conwy 3	1136	932	1111	1252	975	381	1892	628	1227
Colwyn 3	1143	949	782	914	1356	807	1706	1393	651
Pandy	1195	1015	1111	1418	1066	458	1578	545	1132
Betws yn Rhos	1202	1286	1327	1434	1416	711	1067	108	1484
Llangernyw	1213	1267	1673	1248	1429	425	994	99	1858
Pensarn 2	1238	1007	1221	1739	930	681	1128	535	1087
Uwchaed	1240	1330	1560	1682	1559	460	1674	50	1524
Llandrillo yn Rhos 2	1250	1078	1022	680	1710	888	1249	997	1016
Tudno 3	1268	1164	1111	1570	1123	1528	262	615	1347
Betws-y-Coed	1273	1385	1673	1601	920	506	1016	199	1047
Llanddulas	1304	1326	1111	1536	1606	1145	592	325	917

■	Amongst 10% most deprived in Wales
■	Amongst 20% most deprived in Wales
■	Amongst 30% most deprived in Wales

LSOA Name	Overall index	Income	Employment	Health	Education	Housing	Physical environment	Access to services	Community safety
Caerhun	1379	1519	1447	1531	1422	562	901	210	1684
Eglwysbach	1394	1732	1560	1462	1393	742	705	133	1851
Conwy 2	1406	1032	1111	1417	1376	450	1490	1547	937
Llansanffraid 1	1426	1201	1221	1552	1293	694	1197	855	908
Llandrillo yn Rhos 1	1430	1409	1327	939	1684	1629	916	387	1546
Capelulo	1443	1268	1447	1577	1283	451	1636	484	1194
Colwyn 1	1456	1200	1111	1139	1525	940	1874	1121	752
Pentre Mawr 2	1468	1317	1221	1386	1300	993	680	924	1255
Craig-y-Don 2	1492	1486	1327	1267	1464	1589	496	574	1263
Eirias 2	1548	1165	1327	1067	1640	1089	1494	1230	1149
Llandrillo yn Rhos 5	1576	1265	1111	1532	1695	1640	1790	725	1180
Llansanffraid 2	1599	1775	1447	1838	1437	1099	1450	237	1387
Penrhyn 1	1619	1636	1560	1619	1713	788	1393	338	1248
Rhiw 4	1622	1237	1111	1255	1828	944	1863	1529	1279
Rhiw 1	1639	1724	1447	1168	1837	1494	1890	350	1438
Gele 2	1656	1523	1221	1470	1452	1489	1796	743	1801
Rhiw 2	1706	1532	1447	1347	1788	1334	1888	658	1424
Marl 1	1756	1712	1560	1561	1636	1636	1394	581	1501
Deganwy 1	1763	1713	1560	1749	1676	1718	1894	389	1813
Gele 3	1793	1820	1560	1608	1790	1715	1744	453	1850
Penrhyn 3	1847	1773	1560	1715	1715	1680	1390	859	1832
Penrhyn 2	1879	1772	1761	1530	1624	1702	1822	1088	1797