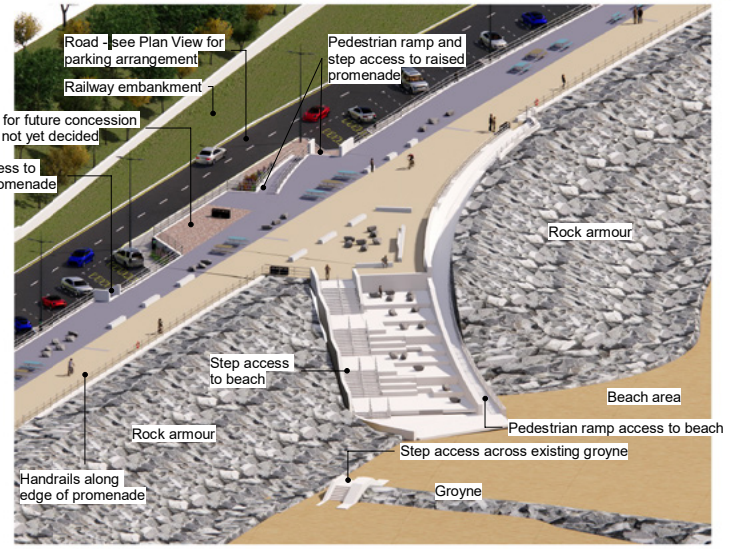
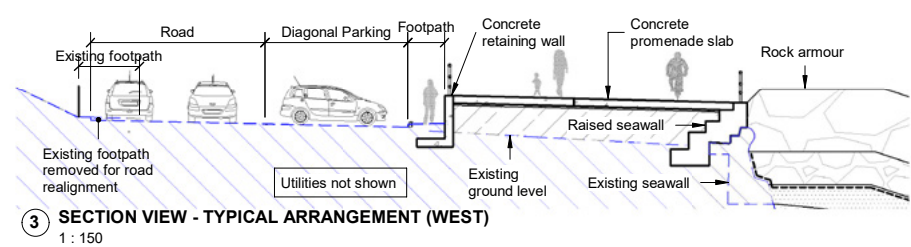
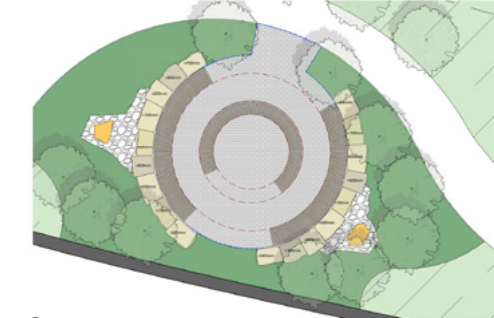
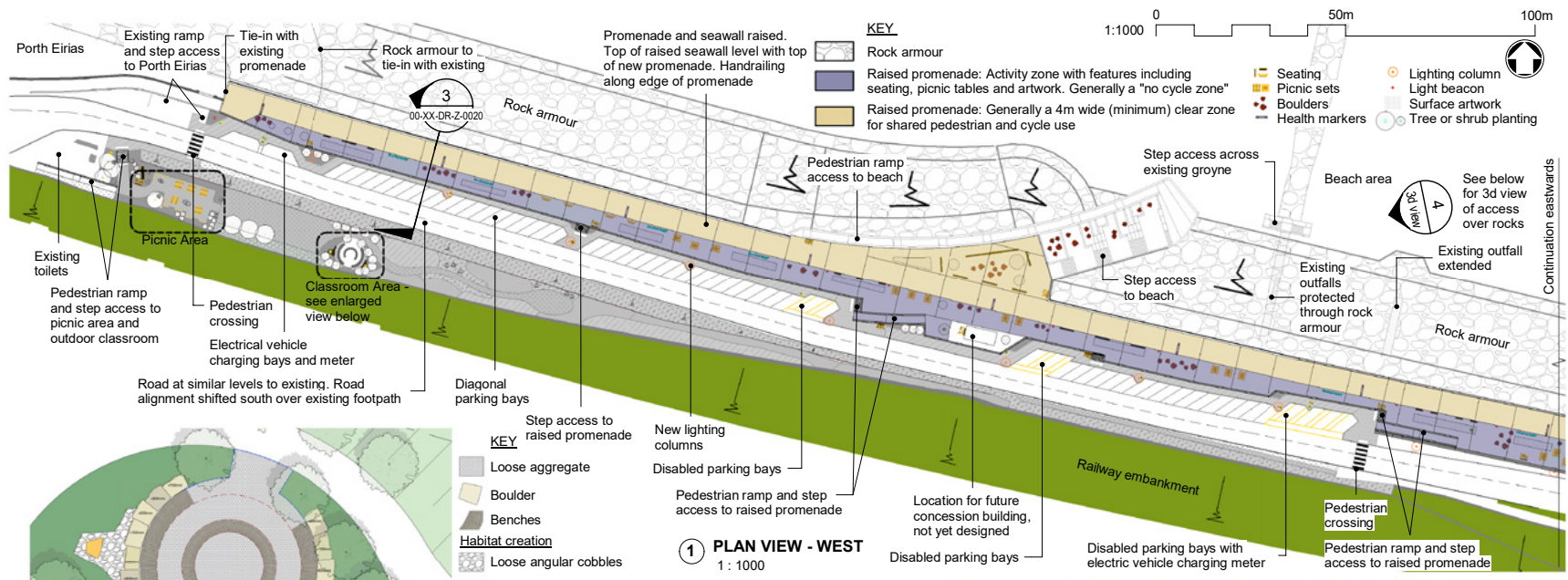
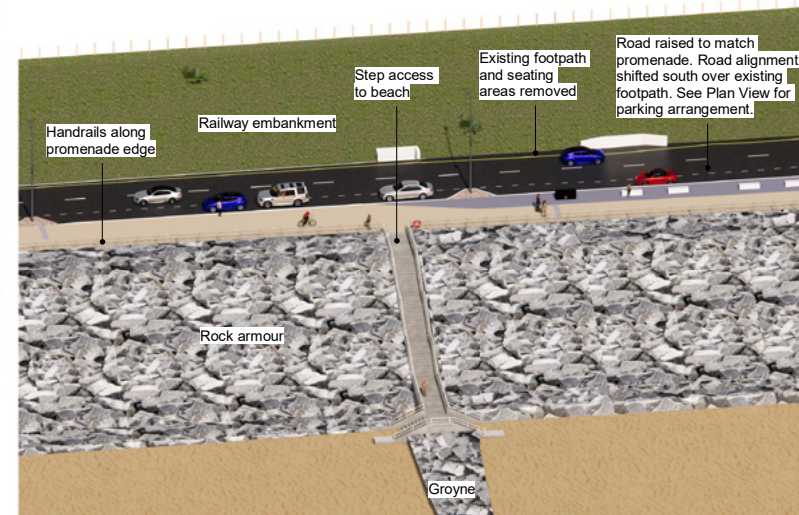
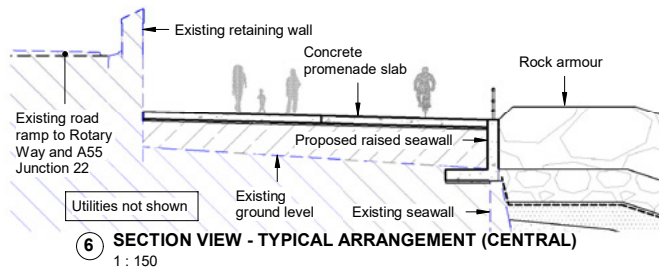
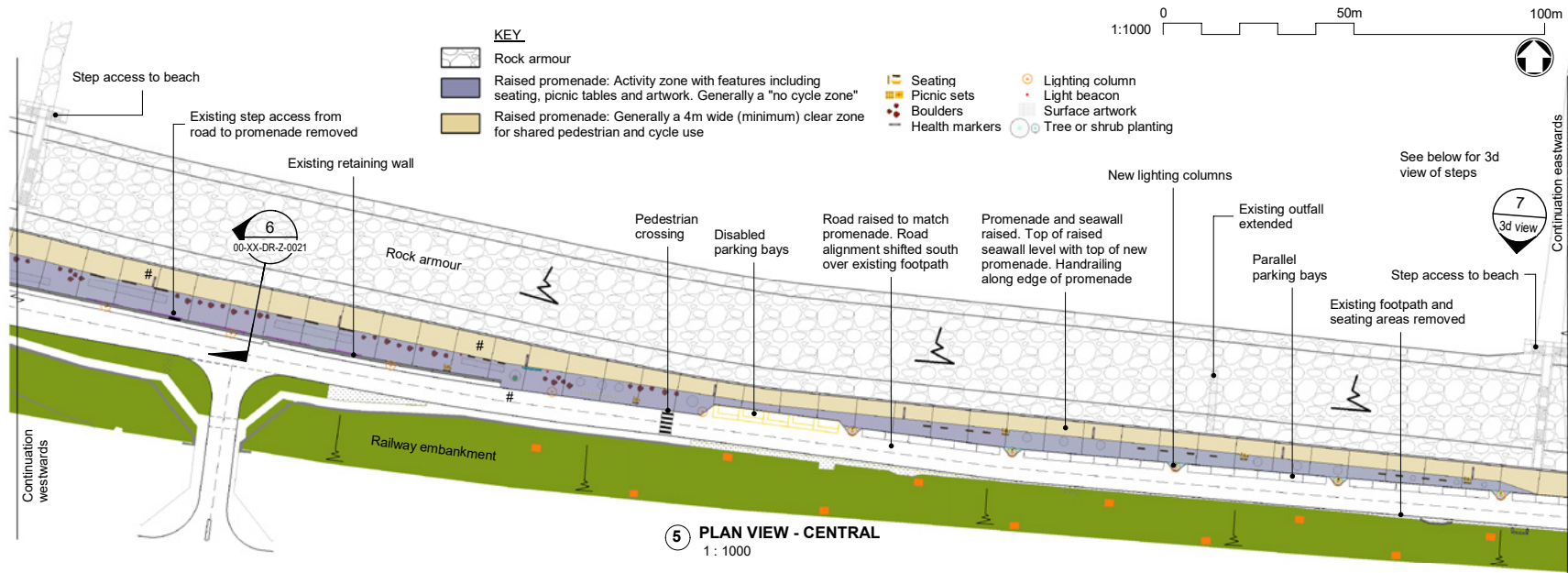


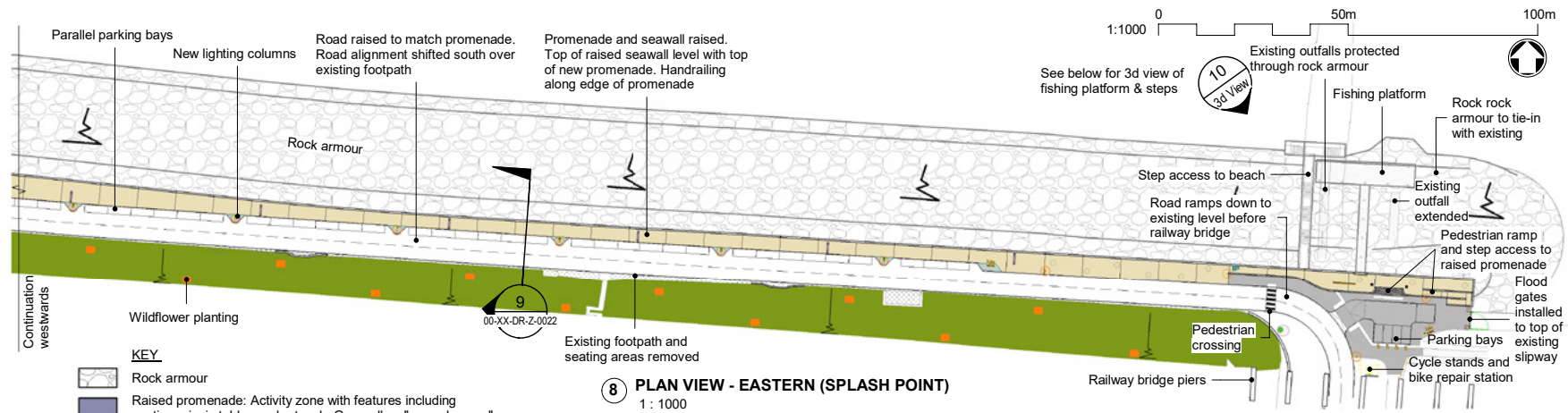
Old Colwyn – Coastal Defence Improvements



Old Colwyn – Coastal Defence Improvements

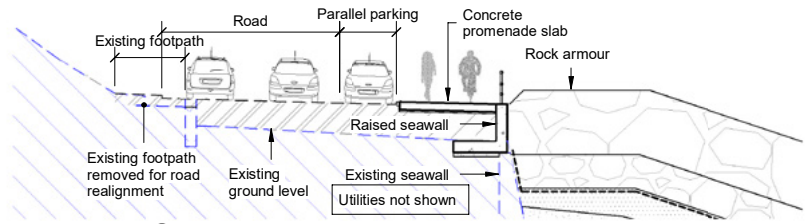


Old Colwyn – Coastal Defence Improvements

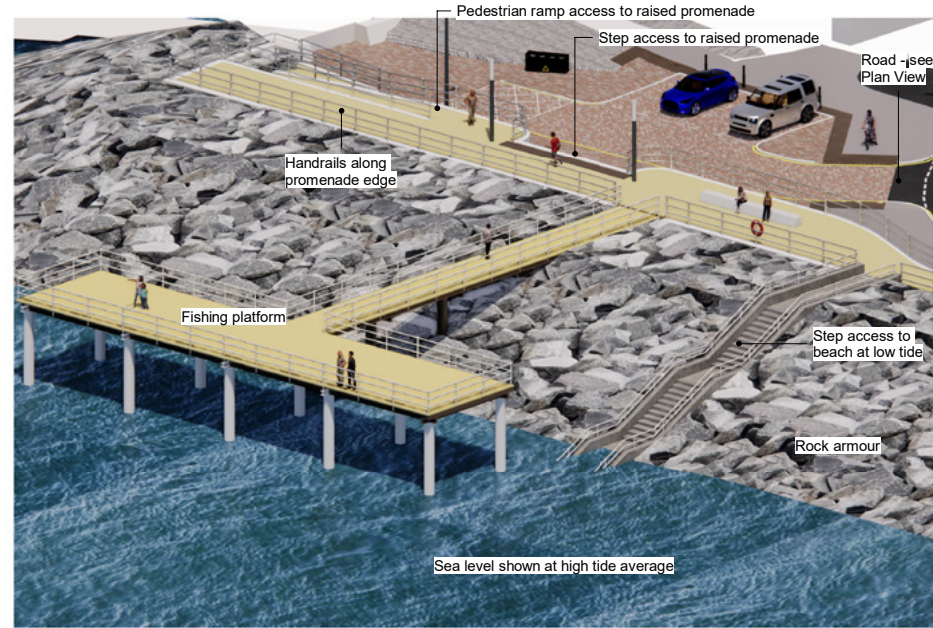


8 PLAN VIEW - EASTERN (SPLASH POINT)
1 : 1000

- KEY**
- Rock armour
 - Raised promenade: Activity zone with features including seating, picnic tables and artwork. Generally a "no cycle zone"
 - Raised promenade: Generally a 4m wide (minimum) clear zone for shared pedestrian and cycle use
 - Seating
 - Picnic sets
 - Lighting column
 - Light beacon
 - Boulders
 - Surface artwork
 - Health markers
 - Tree or shrub planting



9 SECTION VIEW - TYPICAL ARRANGEMENT (EAST)
1 : 150



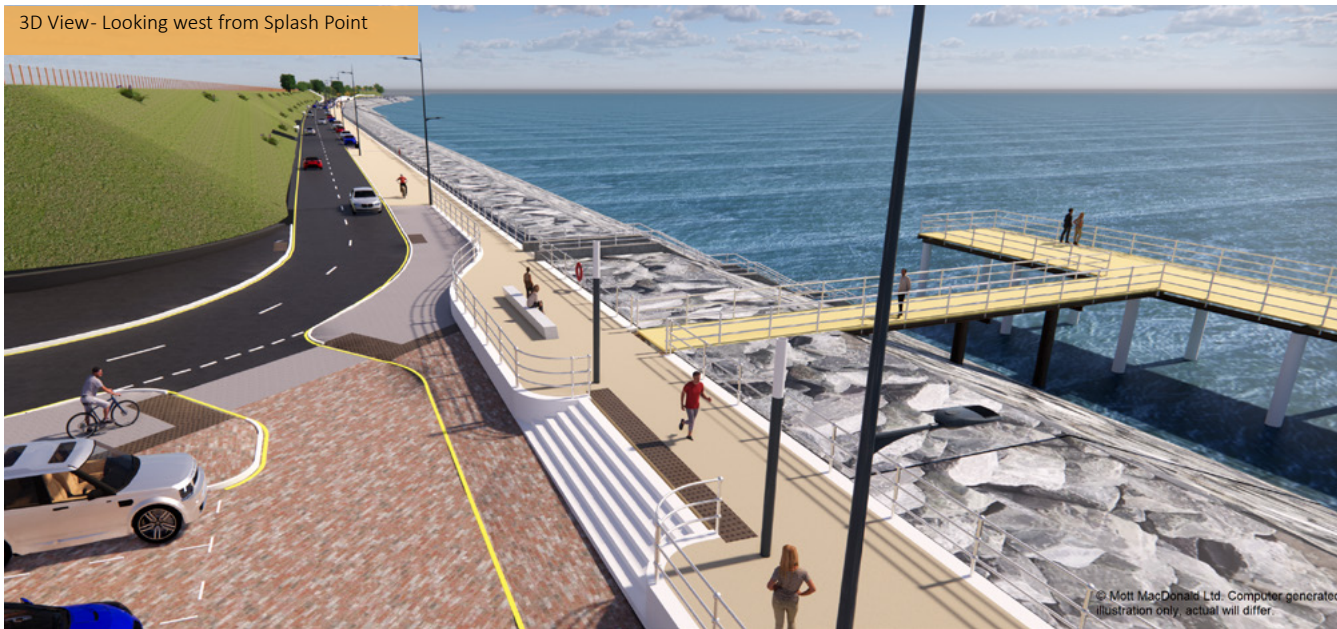
10 3D VIEW - FISHING PLATFORM AND BEACH ACCESS STEPS

Old Colwyn – Coastal Defence Improvements

3D View- Looking east from near Porth Eirias



3D View- Looking west from Splash Point



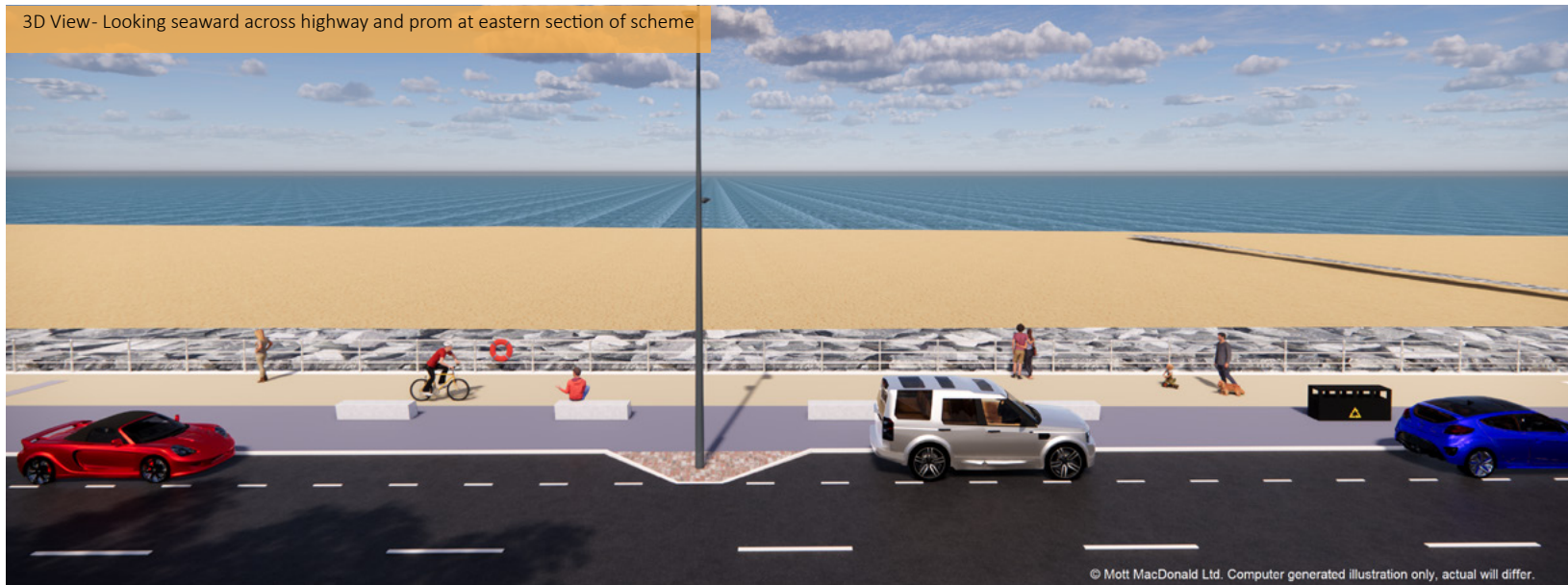
Old Colwyn – Coastal Defence Improvements

3D View- Looking seaward across highway and prom at western section of scheme



© Mott MacDonald Ltd. Computer generated illustration only, actual will differ.

3D View- Looking seaward across highway and prom at eastern section of scheme



© Mott MacDonald Ltd. Computer generated illustration only, actual will differ.

Old Colwyn – Coastal Defence Improvements

3D View- Looking west towards Porth Eirias from west of Rotary Way



3D View- Looking east towards Splash Point

